

**LOS ANGELES COUNTY  
DEPARTMENT OF PUBLIC WORKS**

**BENCHMARKS**



**LA CANADA/PASADENA QUAD**

**2005 ADJUSTMENT  
2005 BASELINE  
NAVD 88 DATUM FOOT/METER**

## PREFACE

The Department of Public Works level net is composed of more than 1,700 miles or 2720 kilometers of levels supporting in excess of 9,000 benchmarks. Previously when a major readjustment of the net was undertaken, to emphasize the complete break with previous elevations, the CY, CG, and CL, series benchmarks were re-labeled DY, DG, and DL, respectively. Beginning in 1993 the Baseline readjustment year will be indicated on Baseline BM's, as indicated below (\*). Henceforth all BM numbers will be labeled as a Y, G, or L series that will no longer indicate the major adjustment year.

To facilitate the adjustment, indexing and distribution of the adjusted values of the net, the county territory was divided into 33 quads or areas. For the identification purposes each quad was given a name (i.e. "Rosemead", "La Mirada", and "Santa Fe"...etc). When benchmarks and elevations in the quad are used, the name of the bench and quad must be stated in the description, i.e.:

(*)	BASELINE	90.057	L&BR IN CTR OF CB RET @ NE COR	Y 9191
	(1990)	295.461	LA HABRA BLVD & VALLEY HOME AVE	

It is expected that this general adjustment will for the most part remain sound for 8 to 10 years. Updating constrained adjustments will continue in the future. When a quad is readjusted, new elevations will be published and the date of readjustment will be noted in the benchmark description. Two benchmarks with different adjustment dates will not normally agree with each other.

The basic accuracy of the net is reflected by an indicated field probable error of  $\pm 0.017$  feet per mile (4mm per kilometer) of leveling as determined from conditions of closure. However, many years of experience in vertical control in the greater Los Angeles basin and Antelope Valley indicates that because of varying degrees of subsidence and heaving, the true datum is recovered only by obtaining substantial agreement of a number of benchmarks.

The users of this network of benchmarks are invited to assist in its maintenance by notifying this department of cases of obliteration, apparent mistakes in descriptions or elevations, and the disturbance of benchmarks.

**Datum: North American Vertical Datum of 1988 (NAVD88)**

Note: NAVD 1988 minus approximately 2.3 feet (70 cm) equals NGVD 1929 Datum. For more accurate equations at individual benchmarks refer to previous publications.

**Abbreviations used in Benchmark Descriptions**

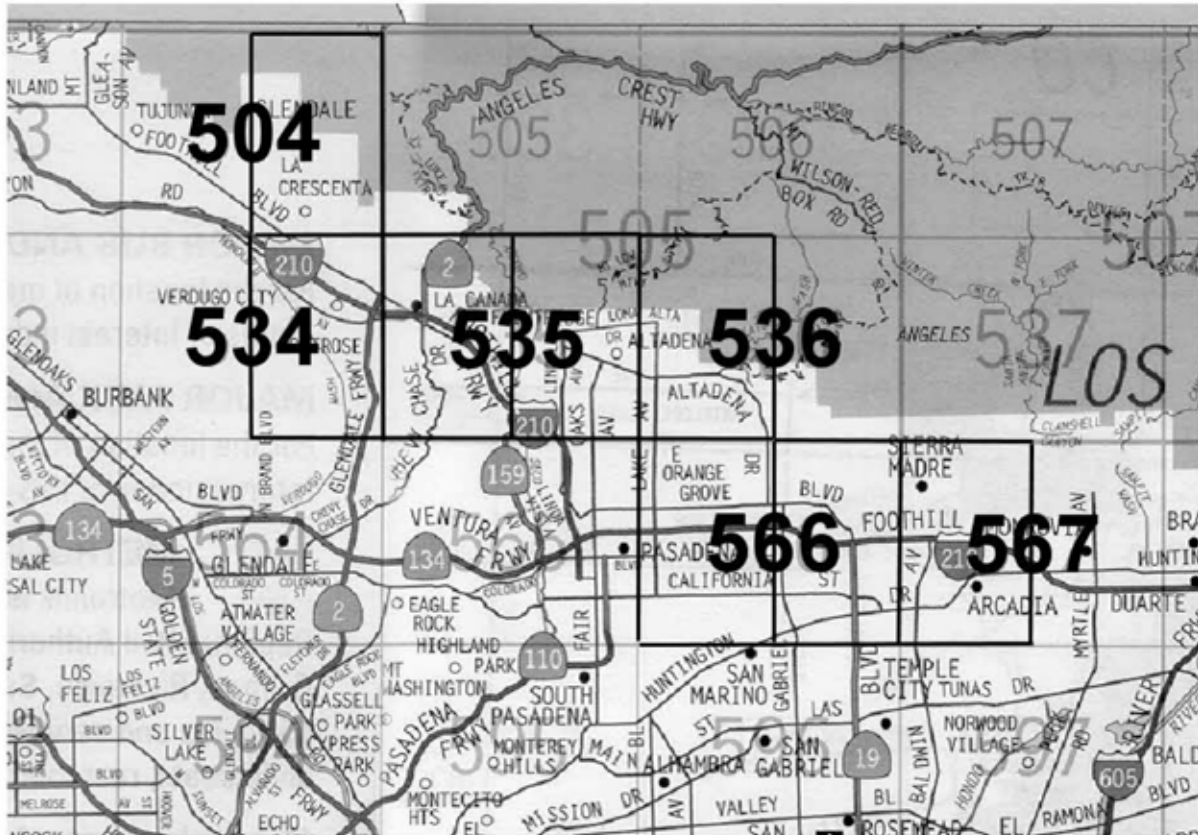
<b>Abbreviations</b>	<b>Descriptions</b>	<b>Abbreviations</b>	<b>Descriptions</b>
<i>ABUT</i>	Abutment	<i>LT</i>	Lead and Tack
<i>ALG</i>	Along	<i>LACE</i>	Los Angeles City Engineer
<i>ANG PT</i>	Angle Point	<i>LACS</i>	La County Engineer
<i>B/W</i>	Back of Walk	<i>LAFC</i>	La County Flood Control
<i>BCR</i>	Begin Curb Return	<i>L&amp;BN</i>	Lead and Bench Nail
<i>BC</i>	Begin Curve	<i>L&amp;BR</i>	Lead and Brad
<i>BLDG</i>	Building	<i>L&amp;N</i>	Lead and Nail
<i>BM</i>	Benchmark	<i>L&amp;SPK</i>	Lead and Spike
<i>BT SPK</i>	Boat or Bolt Spike	<i>L&amp;T</i>	Lead and Tack
<i>BR CAP</i>	Brass Cap Monument	<i>MCR</i>	Middle Curb Return
<i>C B</i>	Catch Basin	<i>MKD</i>	Marked
<i>CTR</i>	Center	<i>MC</i>	Middle Curve
<i>C/L</i>	Centerline	<i>MON</i>	Monument
<i>C/L INT</i>	Centerline Intersection	<i>N/O</i>	North of
<i>C/L PROD</i>	Centerline Produced	<i>NR</i>	Near
<i>CONC</i>	Concrete	<i>OPP</i>	Opposite
<i>COR</i>	Corner	<i>PI</i>	Point of Intersection
<i>COE</i>	Corps of Engineers	<i>PK&amp;W</i>	PK Nail and Washer
<i>CULV</i>	Culvert	<i>P/L</i>	Property Line
<i>CYN</i>	Canyon	<i>POST</i>	Point on Simi-Tangent
<i>CB</i>	Curb	<i>PP</i>	Power Pole
<i>CS MON</i>	Co. Eng. Monument	<i>PVMT</i>	Pavement
<i>CT SPK</i>	Cut Spike	<i>PROD</i>	Produced
<i>DPW</i>	Dept of Public Works	<i>RD</i>	Road
<i>DR</i>	Driveway	<i>RDBM</i>	Road Dept Benchmark
<i>E/O</i>	East of	<i>RDBM TAG</i>	Road Dept Benchmark Tag
<i>ECR</i>	End Curb Return	<i>RR</i>	Railroad
<i>EC</i>	End Curve	<i>R/W</i>	Right of Way
<i>ENT</i>	Entrance	<i>SDMH</i>	Storm Drain Manhole
<i>FL</i>	Flow line	<i>SMH</i>	Sewer Manhole
<i>FTG</i>	Footing	<i>SPK</i>	Spike
<i>FRWY</i>	Freeway	<i>ST&amp;W</i>	Spike Tin and Washer
<i>F/W</i>	Front of Walk	<i>S/O</i>	South of
<i>GAR</i>	Garage	<i>TP</i>	Telephone Pole
<i>HDWL</i>	Head Wall	<i>USC&amp;GS</i>	US Coast and Geodetic Survey
<i>HSE</i>	House	<i>USGS</i>	US Geological Survey
<i>HWY</i>	Highway	<i>WK</i>	Walk
<i>INT</i>	Intersection	<i>W/O</i>	West of
<i>IP</i>	Iron Pipe		

# QUAD COVERAGE INDEX MAP



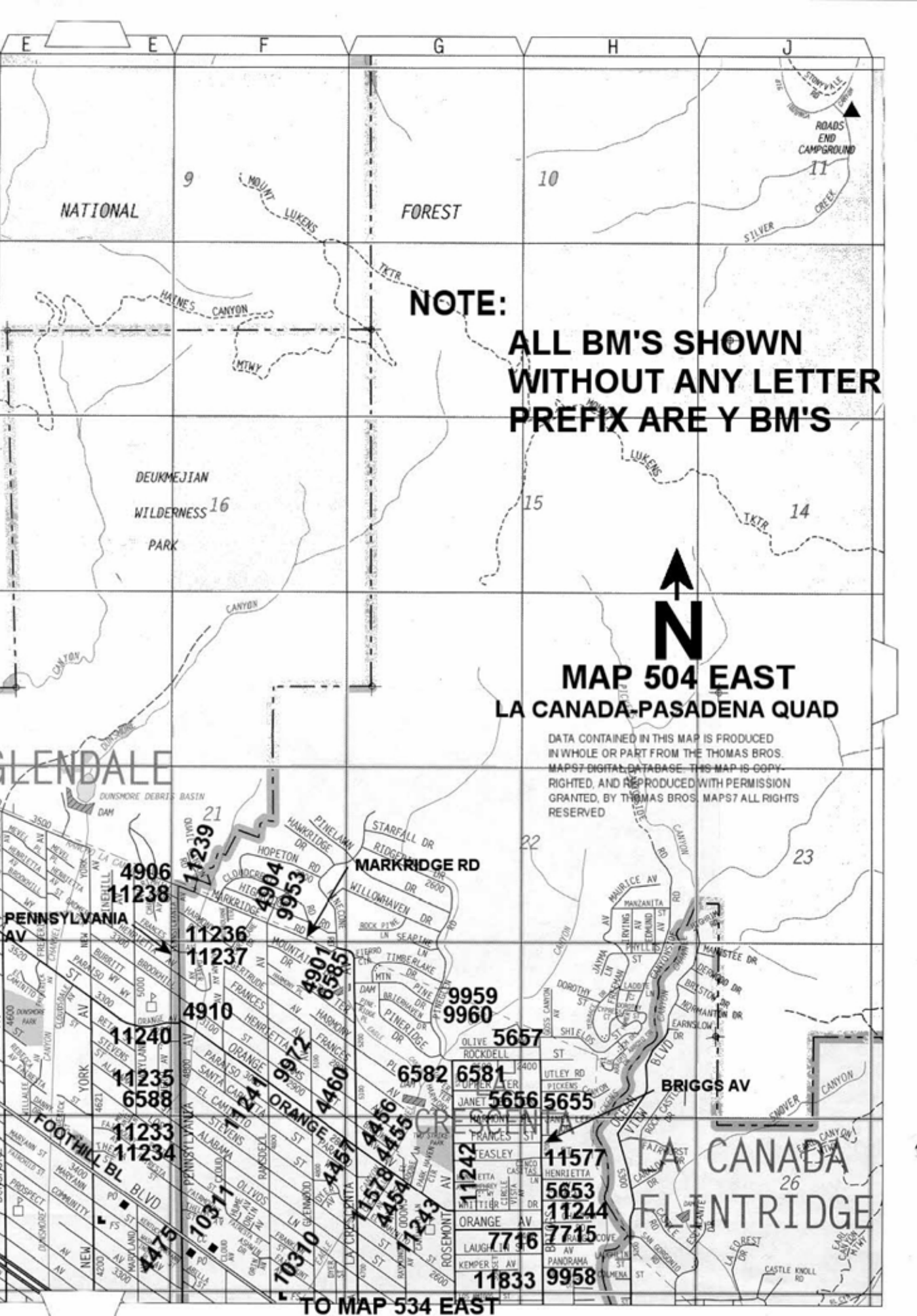
# LA CANADA / PASADENA QUAD INDEX

**ALL BM'S SHOWN WITHOUT  
ANY LETTER PREFIX ARE "Y"  
BM'S**



**NUMBERS REFER  
TO THOMAS BROS  
PAGE NUMBERS**

**EACH THOMAS BROS  
PAGE IS DIVIDED INTO  
TWO INDEX PAGES  
EAST AND WEST**



**NOTE:**

**ALL BM'S SHOWN WITHOUT ANY LETTER PREFIX ARE Y BM'S**



**MAP 504 EAST  
LA CANADA-PASADENA QUAD**

DATA CONTAINED IN THIS MAP IS PRODUCED IN WHOLE OR PART FROM THE THOMAS BROS. MAPS7 DIGITAL DATABASE. THIS MAP IS COPYRIGHTED, AND REPRODUCED WITH PERMISSION GRANTED, BY THOMAS BROS. MAPS7 ALL RIGHTS RESERVED

4906  
11238

11239  
11236  
11237

4910  
11240  
11235  
6588

11233  
11234

7031  
7037

4904  
9953

4901  
6585

9972  
4460

4457

4456  
4455

71243

4454

4453

4452

4451

4450

4449

4448

4447

4446

4445

4444

4443

4442

4441

4440

4439

4438

4437

4436

9959  
9960

5657

6582  
6581

5656  
5655

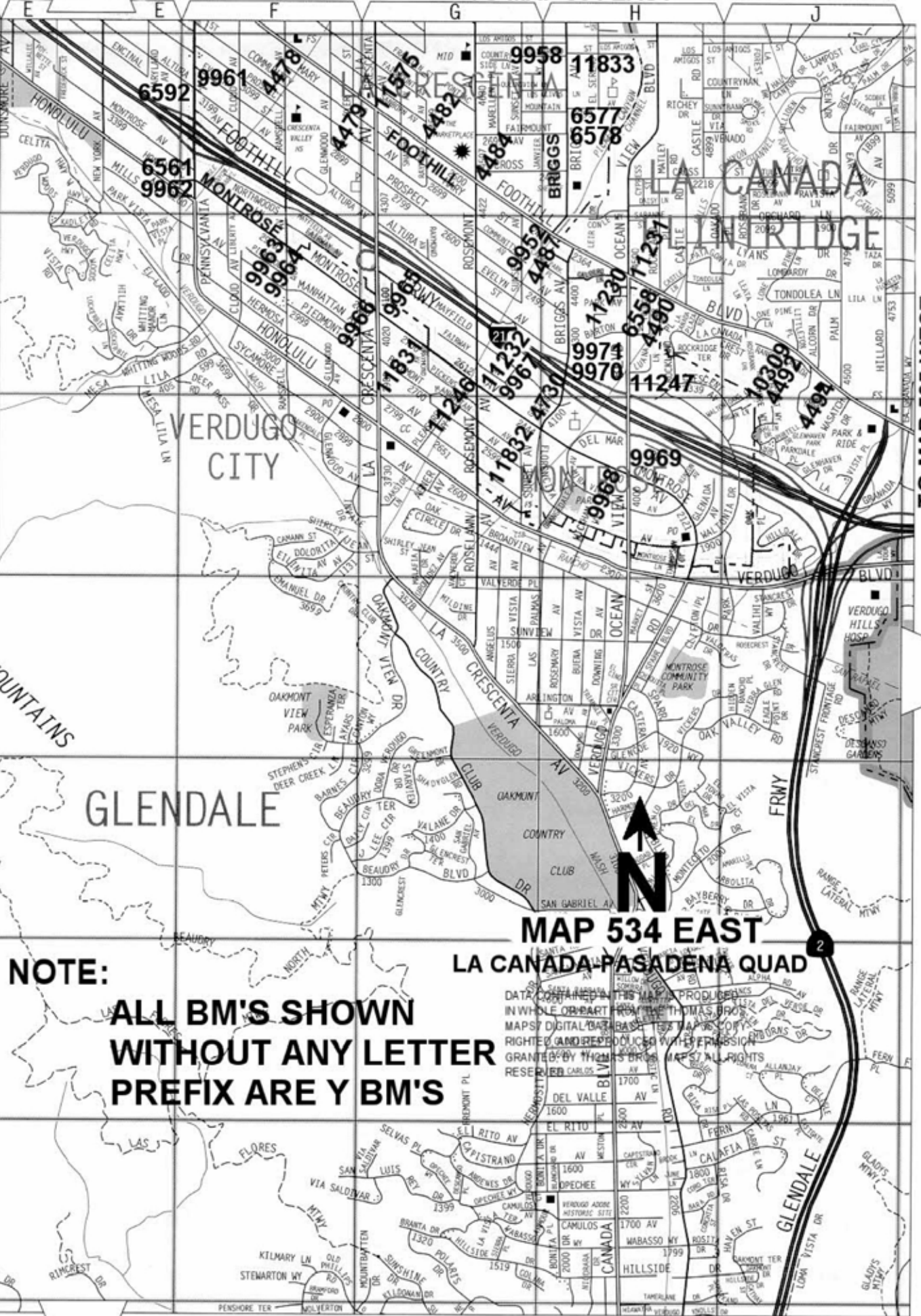
BRIGGS AV

LA CANADA  
FLINTRIDGE

TO MAP 534 EAST

TO MAP 504 EAST

TO MAP 504 EAST



TO MAP 535 WEST

# MAP 534 EAST

## LA CANADA-PASADENA QUAD

**NOTE:**

**ALL BM'S SHOWN  
WITHOUT ANY LETTER  
PREFIX ARE Y BM'S**

DATA CONTAINED IN THIS MAP IS THE PROPERTY OF THE PRODUCERS AND IS NOT TO BE REPRODUCED OR TRANSMITTED IN ANY FORM OR BY ANY MEANS, ELECTRONIC OR MECHANICAL, INCLUDING PHOTOCOPYING, RECORDING, OR BY ANY INFORMATION STORAGE AND RETRIEVAL SYSTEM, WITHOUT PERMISSION IN WRITING FROM THE PRODUCERS. ALL RIGHTS RESERVED.

2



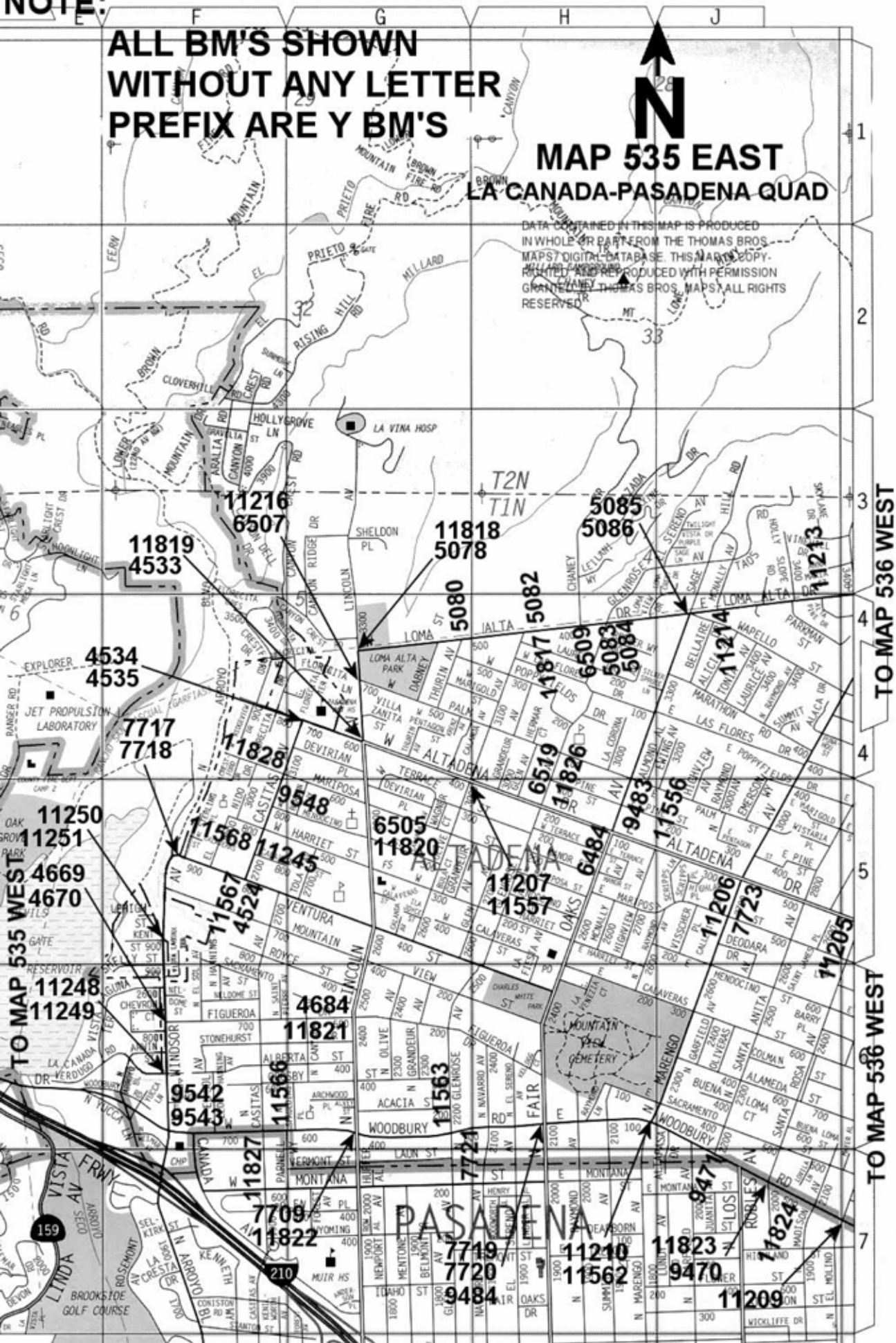
NOTE:

ALL BM'S SHOWN  
WITHOUT ANY LETTER  
PREFIX ARE Y BM'S

**MAP 535 EAST**  
**LA CANADA-PASADENA QUAD**



DATA CONTAINED IN THIS MAP IS PRODUCED  
IN WHOLE OR PART FROM THE THOMAS BROS.  
MAPS DIGITAL DATABASE. THIS MAP IS COPY-  
RIGHTED AND REPRODUCED WITH PERMISSION  
GRANTED BY THOMAS BROS. MAPS. ALL RIGHTS  
RESERVED.



TO MAP 535 WEST

TO MAP 536 WEST

TO MAP 535 WEST

TO MAP 536 WEST

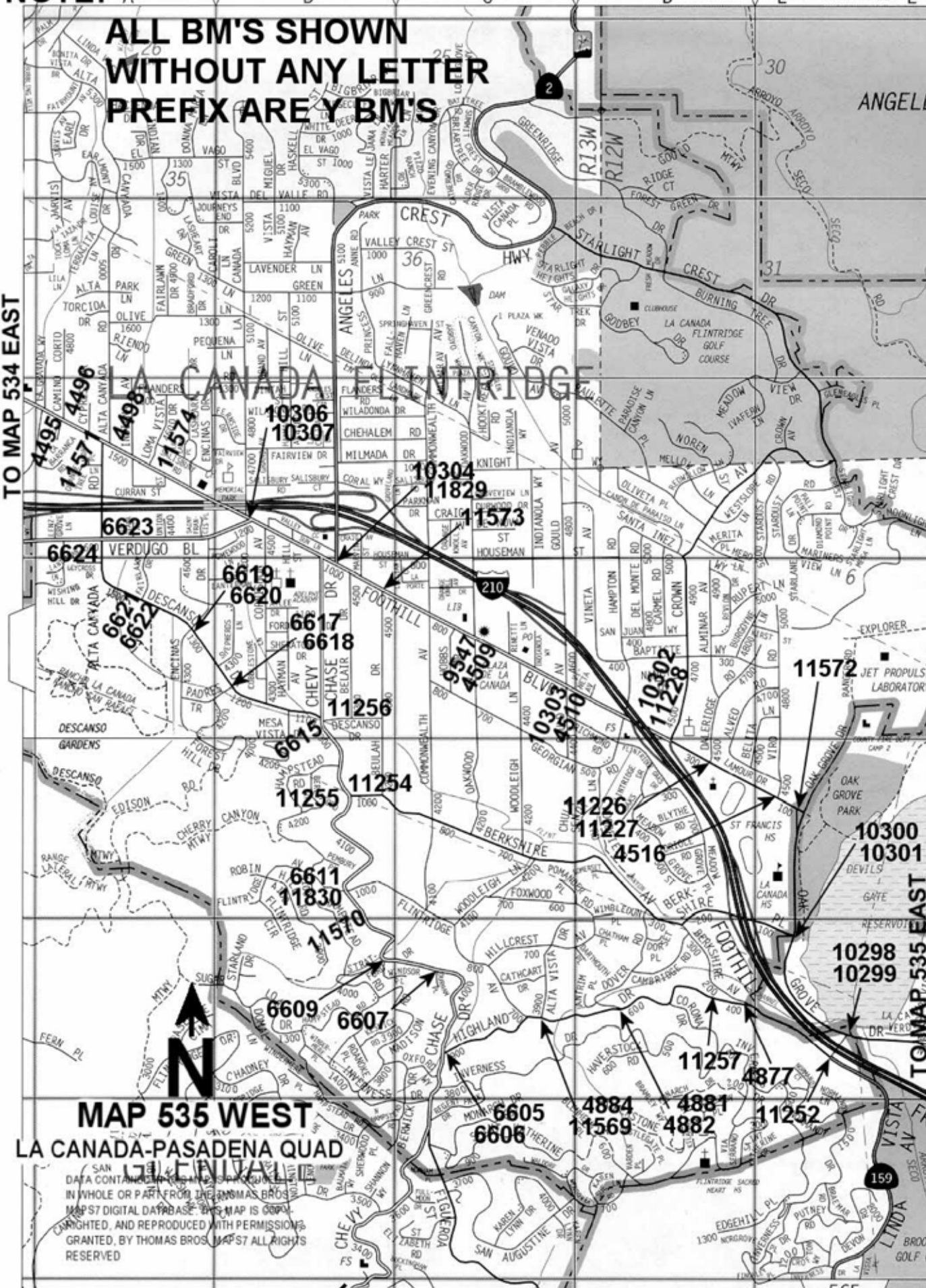


NOTE: A B C D E

ALL BM'S SHOWN WITHOUT ANY LETTER PREFIX ARE Y BM'S

TO MAP 534 EAST

ANGELE



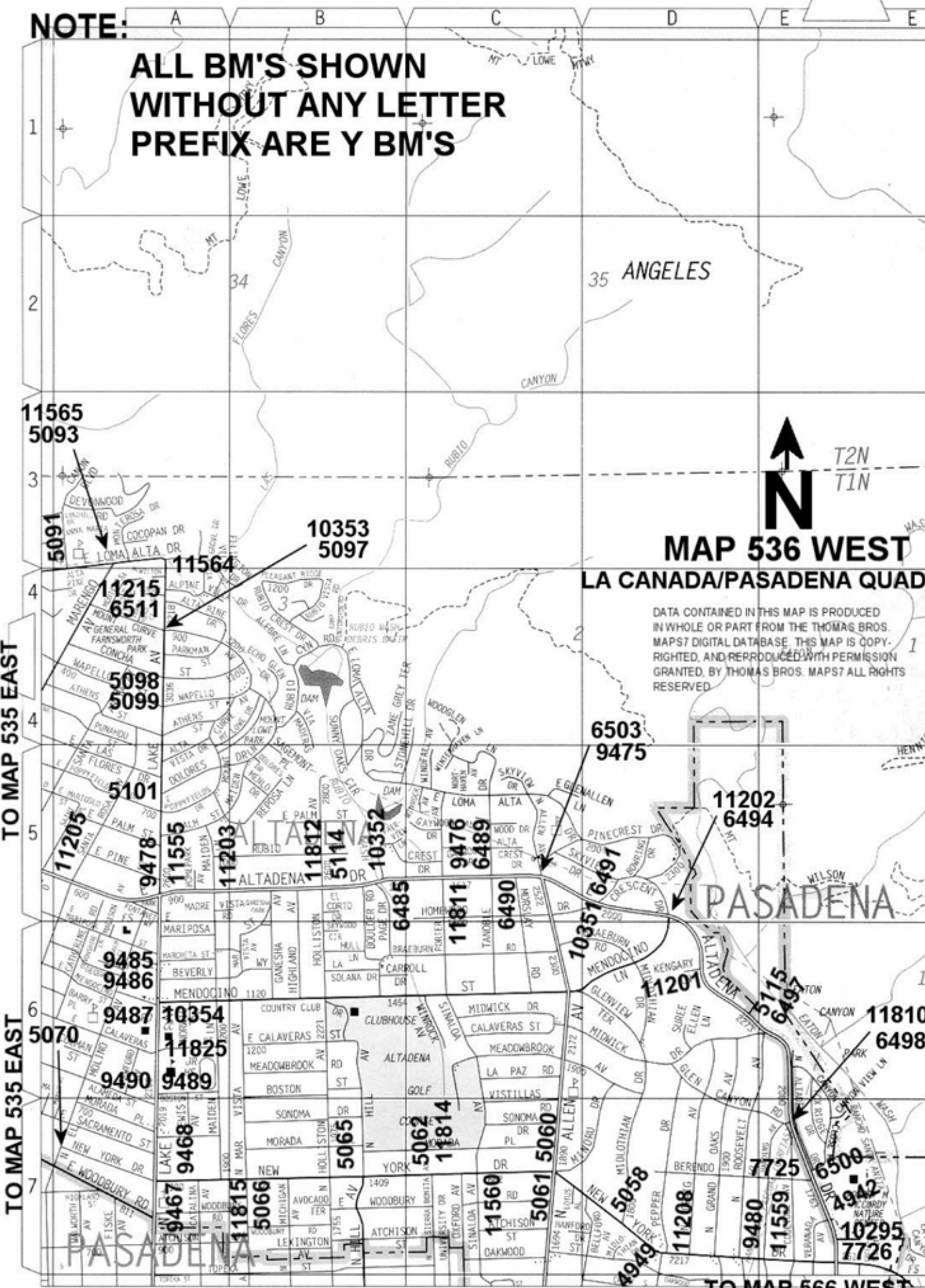
MAP 535 WEST  
LA CANADA-PASADENA QUAD

SAN  
DATA CONTAINED ON THIS MAP IS PRODUCED  
IN WHOLE OR PART FROM THE ANIMAS BROS.  
MAPS 7 DIGITAL DATABASE. THIS MAP IS COPY-  
RIGHTED, AND REPRODUCED WITH PERMISSION  
GRANTED, BY THOMAS BROS. MAPS 7 ALL RIGHTS  
RESERVED

TO MAP 535 EAST

**NOTE:**

**ALL BM'S SHOWN  
WITHOUT ANY LETTER  
PREFIX ARE Y BM'S**



T2N  
T1N

**MAP 536 WEST**

**LA CANADA/PASADENA QUAD**

DATA CONTAINED IN THIS MAP IS PRODUCED IN WHOLE OR PART FROM THE THOMAS BROS. MAPS7 DIGITAL DATABASE. THIS MAP IS COPYRIGHTED, AND REPRODUCED WITH PERMISSION GRANTED, BY THOMAS BROS. MAPS7 ALL RIGHTS RESERVED.

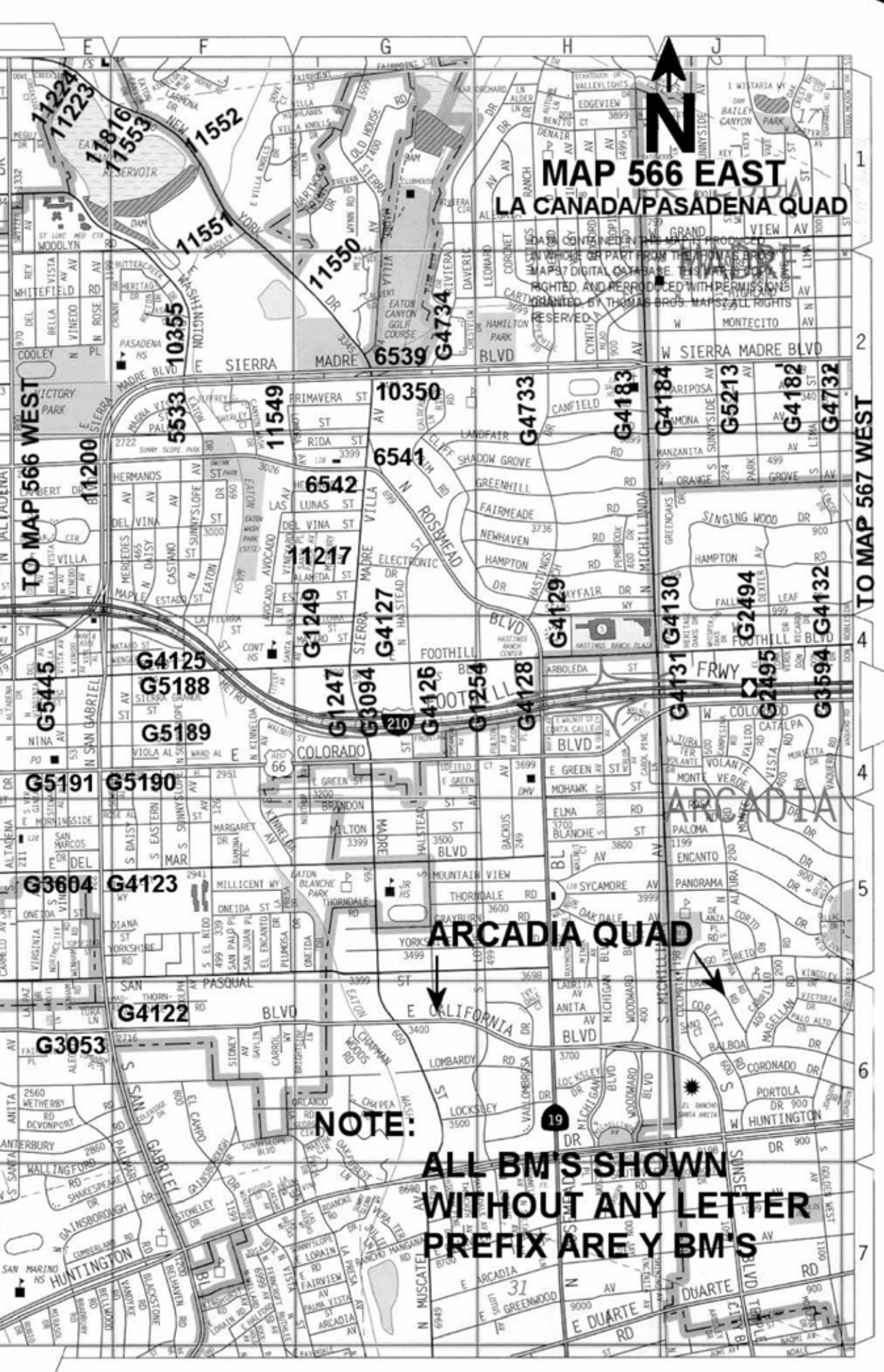
TO MAP 535 EAST

TO MAP 535 EAST

TO MAP 566 WEST



# MAP 566 EAST LA CANADA/PASADENA QUAD



TO MAP 566 WEST

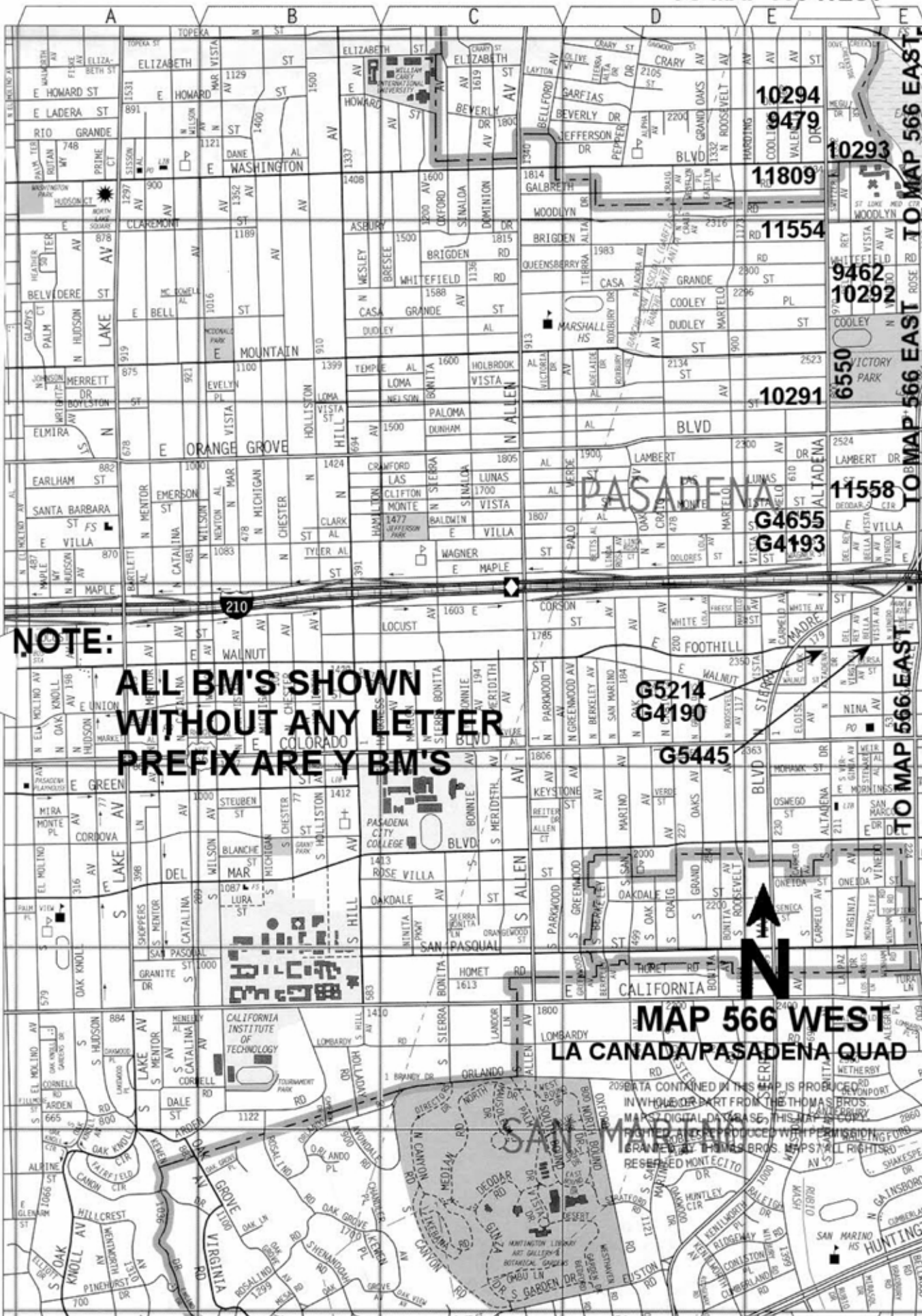
TO MAP 567 WEST

## ARCADIA QUAD

**NOTE:**

**ALL BM'S SHOWN  
WITHOUT ANY LETTER  
PREFIX ARE Y BM'S**





**NOTE:**

**ALL BM'S SHOWN WITHOUT ANY LETTER PREFIX ARE Y BM'S**

**G5214  
G4190**

**G5445**



**MAP 566 WEST  
LA CANADA/PASADENA QUAD**

DATA CONTAINED IN THIS MAP IS PRODUCED IN WHOLE OR PART FROM THE THOMAS BROS. MAPS DIGITAL DATABASE. THIS MAP IS A COPY OF THE ORIGINAL MAP PRODUCED BY THOMAS BROS. MAPS. ALL RIGHTS RESERVED. MONTECITO

TO MAP 566 EAST

TO MAP 566 EAST

TO MAP 566 EAST

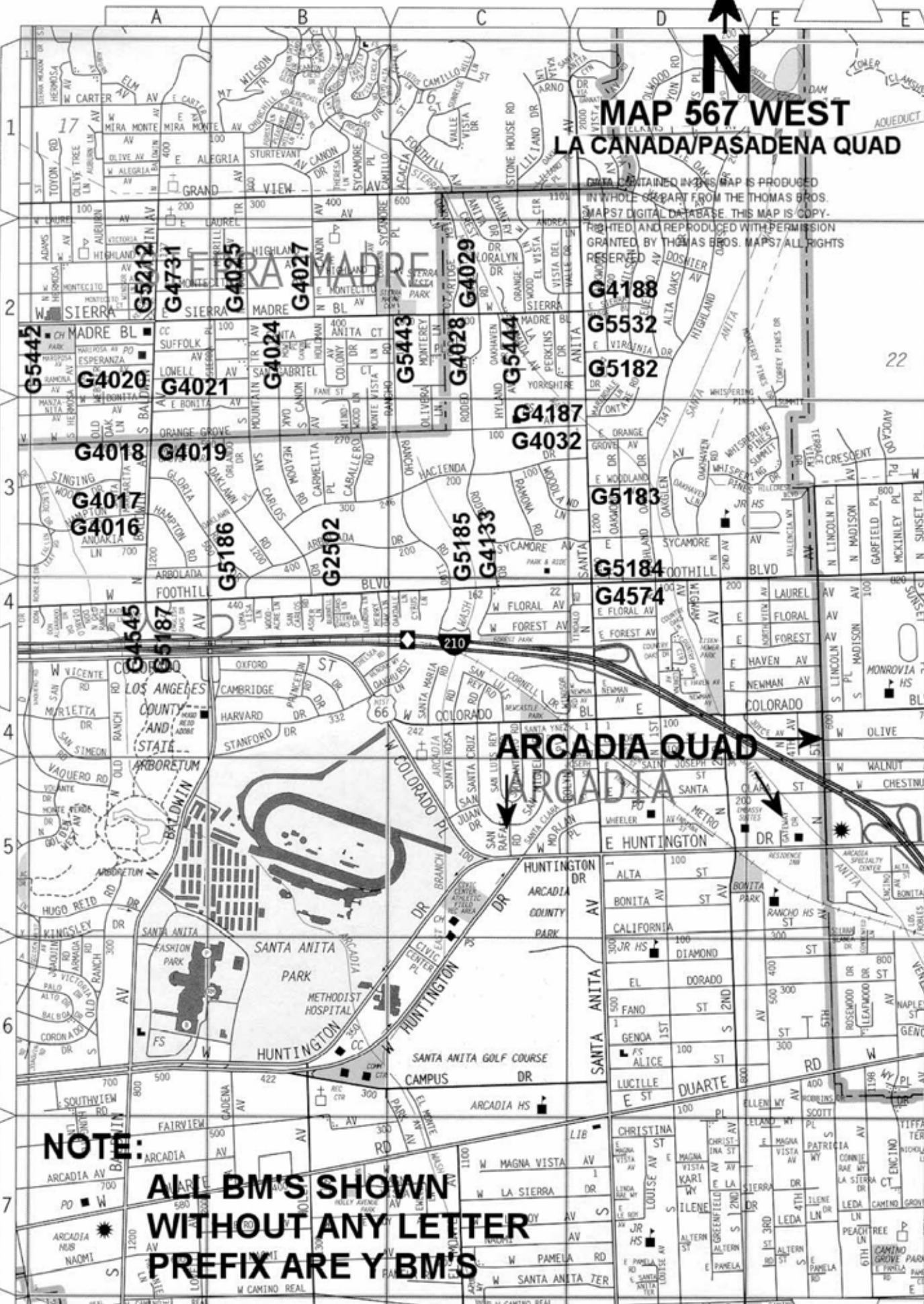
TO MAP 566 EAST

# MAP 567 WEST LA CANADA/PASADENA QUAD



THIS MAP IS PRODUCED IN WHOLE OR PART FROM THE THOMAS BROS. MAPS 7 DIGITAL DATABASE. THIS MAP IS COPY-RIGHTED AND REPRODUCED WITH PERMISSION GRANTED BY THOMAS BROS. MAPS. ALL RIGHTS RESERVED.

TO MAP 566 EAST



**NOTE:**  
ALL BM'S SHOWN  
WITHOUT ANY LETTER  
PREFIX ARE Y BM'S

QUAD YEAR	ELEV FOOT/METER	DESCRIPTION	BM NUMBER
BASELINE (2005)	716.650 218.436	L&BN IN E CB 9M(29.5FT) N/O BCR @ NE COR FOOTHILL BLVD & SIERRA MADRE VILLA	G 1247
BASELINE (2005)	723.090 220.398	RAMSET IN S CB 300MM(1FT) W/O BCR @ SE COR SANTA PAULA AVE & FOOTHILL BLVD	G 1249
BASELINE (2005)	689.945 210.296	L&BN IN S CB FOOTHILL BLVD 10.5M(34FT) S/O C/L IN CTR OF C. B. @ BLDG #3600 161M(530FT) W/O ROSEMEAD BLVD	G 1254
BASELINE (2005)	668.997 203.911	SPK&W IN N CB 300MM(1FT) E/O BCR @ NE COR FOOTHILL BLVD & DEXTER AVE MKD BM	G 2494
BASELINE (2005)	672.355 204.934	L&BN IN E CB 300MM(1FT) S/O BCR @ NE COR DEXTER AVE & FOOTHILL BLVD (N SERV RD) 7.5M(24.6FT) N/O & 6.5M(21.3FT) E/O C/L INT	G 2495
BASELINE (2005)	663.599 202.266	SPK IN E CB 2M(6.5FT) S/O BCR @ SE COR CALIFORNIA BLVD & SAN GABRIEL BLVD	G 3053
BASELINE (2005)	716.347 218.343	CS MON IN WELL 300MM(1FT) E/O CF 15M(49FT) N/O BCR @ NE COR FOOTHILL BLVD & SIERRA MADRE VILLA MKD (BM 10-9A RE 5869 1962)	G 3094
BASELINE (2005)	656.527 200.110	RDBM TAG IN N CB FOOTHILL BLVD 300MM(1FT) E/O BCR SERVICE RD 8M(26FT) N/O C/L & 23M(75.5FT) E/O C/L DON ROBLES DR	G 3594
BASELINE (2005)	697.074 212.469	L&BN IN S END C. B. 1M(3.3FT) N/O BCR @ NW COR DEL MAR BLVD & SAN GABRIEL BLVD	G 3604
PASADENA (2005)	692.504 211.076	PK&TAG IN E CB 1M(3.3FT) E/O BCR @ NE COR BALDWIN AVE & HAMPTON RD MKD (BM)	G 4016
PASADENA (2005)	694.046 211.546	RDBM TAG IN E CB (SERV RD) @ S END C. B. 13.5M(44FT) W/O & 9M(29.5FT) N/O C/L INT BALDWIN AVE & HAMPTON RD	G 4017
PASADENA (2005)	742.193 226.221	RDBM TAG IN S CB 7M(23FT) E/O BCR @ SE COR BALDWIN AVE & ORANGE GROVE AVE	G 4018
PASADENA (2005)	745.473 227.221	RDBM TAG IN W CB @ S END C. B. 300MM(1FT) N/O BCR @ NW COR BALDWIN AVE & ORANGE GROVE AVE	G 4019
PASADENA (2005)	770.139 234.739	RDBM TAG IN E CB BALDWIN AVE 8M(26FT) E/O C/L & 2.5M(8.2FT) S/O C/L PROD BONITA AVE (FR THE W)	G 4020
PASADENA (2005)	772.751 235.535	RDBM TAG IN N CB 600MM(2FT) W/O BCR @ NW COR BALDWIN AVE & BONITA AVE (FR THE W)	G 4021
PASADENA (2005)	777.212 236.895	RDBM TAG IN W CB @ C. B. 15.5M(51FT) N/O BCR @ NW COR SIERRA MADRE BLVD & MT TRAIL AVE	G 4024
PASADENA (2005)	767.699 233.995	RDBM TAG IN E CB 14M(46FT) S/O BCR @ SE COR SIERRA MADRE BLVD & MT TRAIL AVE	G 4025
PASADENA (2005)	744.776 227.008	RDBM TAG IN E CB NR C. B. 8M(26.2FT) N/O BCR @ NE COR SIERRA MADRE BLVD & CANON AVE	G 4027
PASADENA (2005)	669.272 203.995	RDBM TAG IN W CB 2.5M(8.2FT) N/O BCR @ NW COR SIERRA MADRE BLVD & CLARIDGE ST	G 4028



QUAD YEAR	ELEV FOOT/METER	DESCRIPTION	BM NUMBER
PASADENA (2005)	668.576 203.783	RDBM TAG IN E CB 600MM(2FT) S/O BCR @ NE COR SIERRA MADRE BLVD & CLARIDGE ST	G 4029
BASELINE (2005)	664.025 202.395	RDBM TAG IN S END C. B. 2M(6.5FT) N/O BCR @ NE COR SAN GABRIEL BLVD & CALIFORNIA BLVD	G 4122
BASELINE (2005)	696.634 212.335	CSBM MON IN N END C. B. @ NE COR SAN GABRIEL BLVD & DEL MAR BLVD MKD (BM 10-7A 1971 RE 5869)	G 4123
BASELINE (2005)	744.291 226.861	CSBM MON IN N END C. B. 4.5M(14.8FT) N/O BCR @ NW COR FOOTHILL BLVD & DAISY AVE MKD (BM 10-8B 1971 RE 5869)	G 4125
BASELINE (2005)	703.929 214.558	RDBM TAG IN N CB 300MM(1FT) E/O BCR @ NE COR FOOTHILL BLVD & HALSTEAD ST	G 4127
BASELINE (2005)	694.076 211.555	RDBM TAG IN S CB 2M(6.5FT) E/O BCR @ SW COR ROSEMEAD BL & FOOTHILL BLVD	G 4128
BASELINE (2005)	695.676 212.043	CSBM MON 300MM(1FT) N/O CF 1M(3.3FT) E/O BCR @ NE COR ROSEMEAD BL & FOOTHILL BL MKD (BM 10-9C 1971 RE 5869)	G 4129
BASELINE (2005)	681.202 207.631	CSBM MON IN N END C. B. 3.5M(11.5FT) N/O BCR @ NW COR FOOTHILL BLVD & MICHILLINDA AVE MKD (BM 10-10A 1971)	G 4130
BASELINE (2005)	677.536 206.514	RDBM TAG IN S CB 300MM(1FT) E/O BCR @ SE COR FOOTHILL BLVD & MICHILLINDA AVE	G 4131
BASELINE (2005)	656.593 200.130	CSBM MON IN W END C. B. 2M(6.5FT) E/O BCR (SERV RD) @ NE COR FOOTHILL BLVD & DON ROBLES DR MKD ( BM 10-11A 1971 RE 5869)	G 4132
BASELINE (2005)	552.316 168.346	FC BM DISC IN W WINGWALL OF FC CHANNEL 11.5M(37.7FT) N/O C/L FOOTHILL BLVD & 116M(380FT) E/O C/L RANCHO RD MKD (BM 062-31125 1967)	G 4133
PASADENA (2005)	874.111 266.430	RDBM TAG IN S CB 300MM(1FT) W/O BCR @ SW COR LIMA ST & SIERRA MADRA BLVD	G 4182
PASADENA (2005)	907.584 276.632	CSBM MON IN S END C. B. 5.5M(18FT) N/O BCR @ NE COR SIERRA MADRE BLVD & MICHILLINDA AVE MKD (BM 25-3B 1975)	G 4183
PASADENA (2005)	907.289 276.543	RAMSET IN N CB 300MM(1FT) W/O BCR @ NW COR MICHILLINDA AVE & SIERRA MADRE BLVD	G 4184
PASADENA (2005)	592.573 180.617	L&BR IN CTR CB RET @ SW COR SANTA ANITA AVE & ORANGE GROVE AVE	G 4187
PASADENA (2005)	658.743 200.785	FC TAG IN CTR CB RET @ NE COR SANTA ANITA AVE & SIERRA MADRE BLVD	G 4188
PASADENA (2005)	761.767 232.187	RDBM TAG IN S CB 300MM(1FT) E/O BCR @ SE COR FOOTHILL BLVD & ALTADENA DR	G 4190
PASADENA (2005)	798.187 243.288	RDBM TAG IN E CB 300MM(1FT) S/O BCR @ SE COR VILLA ST & ALTADENA DR	G 4193
BASELINE (2005)	638.647 194.660	RDBM TAG IN SE COR EDISON BOX 600MM(2FT) W/O CF 2M(6.5FT) N/O BCR @ NW COR FOOTHILL BLVD & BALDWIN AVE	G 4545

QUAD YEAR	ELEV FOOT/METER	DESCRIPTION	BM NUMBER
BASELINE (2005)	546.976 166.719	DPW BM TAG IN S END C. B. 6M(20FT) N/O BCR @ NE COR FOOTHILL BLVD & SANTA ANITA AVE	G 4574
PASADENA (2005)	800.755 244.071	CITY ENGR TAG RCE #11257 IN N CB 4.5M(14.8FT) W/O BCR @ NW COR ALTADENA DR & VILLA ST	G 4655
PASADENA (2005)	832.936 253.880	DPW BM TAG IN W CB 300MM(1FT) N/O BCR @ NW COR SIERRA MADRE BLVD & BALDWIN AVE	G 4731
PASADENA (2005)	875.842 266.957	DPW BM TAG IN N CB 300MM(1FT) W/O BCR @ NW COR SIERRA MADRE BLVD & LIMA ST	G 4732
PASADENA (2005)	908.248 276.835	DPW BM TAG IN W CB 1.5M(5FT) N/O BCR @ NW COR SIERRA MADRE BLVD & HASTINGS RANCH DR	G 4733
PASADENA (2005)	884.377 269.559	DPW BM TAG IN W CB 1M(3.3FT) N/O BCR @ NW COR SIERRA MADRE BLVD (N BBL) & RIVERA DR	G 4734
PASADENA (2005)	592.443 180.577	COE BR MON IN E CB SANTA ANITA AVE 12M(39.4FT) N/O C/L PROD ORANGE GROVE AVE MKD (BM SW-100 1962)	G 5182
PASADENA (2005)	565.860 172.475	L&BR IN N CB 1M(3.3FT) W/O BCR @ NW COR WOODLAND LN & SANTA ANITA AVE	G 5183
BASELINE (2005)	547.090 166.754	L&BR IN N CB @ BCR @ NW COR SANTA ANITA AVE & FOOTHILL BLVD	G 5184
BASELINE (2005)	560.710 170.905	L&BR IN S CB @ W END C. B. 2M(6.5FT) W/O BCR @ SW COR RANCHO RD & FOOTHILL BLVD	G 5185
BASELINE (2005)	622.084 189.612	L&BN IN N CB FOOTHILL BLVD 10M(33FT) N/O C/L & 32M(105FT) E/O C/L PROD BALDWIN AVE (FROM THE S)	G 5186
BASELINE (2005)	637.631 194.351	DPW BM TAG IN S CB (SERV RD) 2M(6.5FT) E/O BCR @ NE COR FOOTHILL BLVD & BALDWIN AVE S	G 5187
BASELINE (2005)	742.453 226.300	RAMSET IN N CB 300MM(1FT) W/O BCR @ NE COR DAISY AVE & FOOTHILL BLVD	G 5188
BASELINE (2005)	730.494 222.655	CITY OF PASADENA L&TAG IN SW CB RET 1.5M(5FT) N/O BCR @ SW COR WALNUT ST & DAISY AVE	G 5189
BASELINE (2005)	722.431 220.198	DPW BM TAG IN S CB 2M(6.5FT) W/O BCR @ SW COR COLORADO BLVD & SAN GABRIEL BLVD	G 5190
BASELINE (2005)	720.743 219.683	DPW BM TAG IN E CB 1M(3.3FT) S/O BCR @ SE COR COLORADO BLVD & SAN GABRIEL BLVD	G 5191
PASADENA (2005)	826.401 251.888	DPW BM TAG IN S CB 1M(3.3FT) E/O BCR @ SE COR SIERRA MADRE BLVD & BALDWIN AVE	G 5212
PASADENA (2005)	892.752 272.112	L&BR IN E CB 3M(10FT) S/O BCR @ SE COR SUNNYSIDE AVE & SIERRA MADRE BLVD	G 5213
PASADENA (2005)	762.922 232.539	DPW BM TAG IN N CB 1M(3.3FT) E/O BCR @ NE COR ALTADENA DR & FOOTHILL BLVD	G 5214
PASADENA (2005)	852.877 259.958	LACO BM TAG IN E CB 1M(3.3FT) N/O BCR @ NE COR SIERRA MADRE BLVD & AUBURN AVE	G 5442

QUAD YEAR	ELEV FOOT/METER	DESCRIPTION	BM NUMBER
PASADENA ( 2005 )	698.211 212.815	LACO FC MON IN S CB 300MM(1FT) W/O BCR @ SW COR SIERRA MADRE BLVD & RANCHO RD	G 5443
PASADENA ( 2005 )	657.153 200.301	L&T IN W CB 300MM(1FT) N/O BCR @ NW COR SIERRA MADRE BLVD & ORANGEWOOD LN	G 5444
PASADENA ( 2005 )	755.644 230.321	SPK IN S CB FOOTHILL BLVD 2M(6.5FT) W/O C/L PROD BELLA VISTA ST	G 5445
BASELINE ( 2005 )	594.991 181.354	L&DPW BM TAG IN N CB FOOTHILL BL 12.2M(40FT) E/O C/L PROD BURNELL OAKS LN	G 5525
BASELINE ( 2005 )	654.862 199.603	LA CO DPW TAG @ MCR @ SE COR SIERRA MADRE BL & SANTA ANITA AV	G 5532
LA CANADA ( 2005 )	1,776.966 541.621	L&T IN W CB RET ORANGE AVE 300MM(1FT) S/O BCR @ NW COR EL ADOBE LN MKD (BM)	Y 4454
LA CANADA ( 2005 )	1,778.023 541.943	L&T IN N CB ORANGE AVE 300MM(1FT) W/O C. B. 6M(20FT) N/O C/L & 6.5M(21.3FT) W/O FC CHANNEL 122M(400FT) E/O C/L LA CRESCENTA AVE	Y 4455
LA CANADA ( 2005 )	1,777.503 541.785	L&T IN S CB ORANGE AVE 300MM(1FT) W/O C. B. 6M(20FT) S/O C/L & 4.5M(14.8FT) W/O FC CHANNEL 122M(400FT) E/O C/L LA CRESCENTA AVE	Y 4456
LA CANADA ( 2005 )	1,781.888 543.121	L&T NR CTR CB RET @ SE COR LA CRESCENTA AVE & ORANGE AVE	Y 4457
LA CANADA ( 2005 )	1,822.272 555.430	L&T NR CTR CB RET @ SW COR ORANGE AVE & GLENWOOD AVE MKD (BM)	Y 4460
LA CANADA ( 2005 )	1,577.313 480.766	L&BR IN N CB 9M(29.5FT) E/O BCR @ NE COR PENNSYLVANIA AVE & FOOTHILL BLVD	Y 4475
LA CANADA ( 2005 )	1,570.507 478.692	WIRE SPK NR C/L CONC HDWL DRAINAGE CHANNEL 1.5M(5FT) N/O CF FOOTHILL BLVD 14M(46FT) N/O C/L & 123M(400FT) E/O C/L RAMSDELL AVE (W/O BLDG #2933)	Y 4478
LA CANADA ( 2005 )	1,568.118 477.964	CUT SPK IN W CB @ BCR @ NW COR FOOTHILL BLVD & LA CRESCENTA AVE (IN C. B.)	Y 4479
LA CANADA ( 2005 )	1,562.371 476.212	L&BR IN N CB 4.5M(14.8FT) E/O BCR @ NE COR FOOTHILL BLVD & RAYMOND AVE	Y 4482
LA CANADA ( 2005 )	1,548.022 471.839	L&BN IN N CB 9M(29.5FT) E/O BCR @ NE COR FOOTHILL BLVD & ROSEMONT AVE	Y 4484
LA CANADA ( 2005 )	1,530.711 466.562	RAM SET IN W END HDWL 600MM(2FT) E/O BCR 4.5M(14.8FT) N/O N CF @ NE COR FOOTHILL BL & BRIGGS AVE	Y 4487
LA CANADA ( 2005 )	1,501.429 457.637	ST CAL BR CAP IN N CB 300MM(1FT) W/O BCR @ NE COR FOOTHILL BLVD & CASTLE RD	Y 4490
LA CANADA ( 2005 )	1,525.650 465.020	CS BM MON 300MM(1FT) E/O CF 1.5M(5FT) S/O BCR @ NE COR FOOTHILL BL & LITTLETON PL MKD (BM 47-10 1955 RE 63)	Y 4492

QUAD YEAR	ELEV FOOT/METER	DESCRIPTION	BM NUMBER
LA CANADA (2005)	1,498.659 456.793	L&BN IN S CB FOOTHILL BLVD 12M(39FT) S/O C/L & 4.5M(14.8FT) E/O C/L PROD PALM DR	Y 4494
LA CANADA (2005)	1,457.139 444.137	L&BN IN S CB 1.5M(5FT) E/O BCR @ SW COR FOOTHILL BL & EL CAMINO CORTO	Y 4495
LA CANADA (2005)	1,457.184 444.151	L&BN IN S CB 600MM(2FT) E/O BCR @ SE COR FOOTHILL BL & EL CAMINO CORTO	Y 4496
LA CANADA (2005)	1,450.425 442.091	RAMSET IN E CB 600MM(2FT) N/O BCR @ NE COR FOOTHILL BLVD & ALTA CANYADA RD	Y 4498
LA CANADA (2005)	1,229.618 374.789	CS MON IN WELL 300MM(1FT) S/O CF 10M(32.8FT) E/O BCR @ SE COR FOOTHILL BLVD & OAKWOOD AVE MKD (BM 47-6 1955)	Y 4509
LA CANADA (2005)	1,195.017 364.242	RAM SET IN S CB 1M(3.3FT) W/O BCR @ SW COR FOOTHILL BLVD & GOULD AVE	Y 4510
LA CANADA (2005)	1,109.759 338.256	CS MON FL IN CONC WALK 300MM(1FT) S/O SLY CF 7M(23FT) S/O C/L FOOTHILL BLVD & 38M(125FT) E/O C/L PROD VIRO RD MKD (BM 47-4 1955 RE 63)	Y 4516
LA CANADA (2005)	1,173.031 357.541	L&SPK IN S CB VENTURA ST 4.5M(14.8FT) S/O C/L & 3M(9.8FT) W/O C/L PROD CASITAS AVE MKD (AE 505)	Y 4524
LA CANADA (2005)	1,259.193 383.803	RD HD SPK IN S CB 600MM(2FT) E/O BCR @ SE COR LINCOLN AVE & ALTADENA DR	Y 4533
LA CANADA (2005)	1,241.802 378.502	RD HD SPK IN S CB 2M(6.5FT) E/O OF END @ SE COR CASITAS AVE & ALTADENA DR	Y 4534
LA CANADA (2005)	1,242.518 378.721	L&T IN N CB ALTADENA DR 8M(26FT) N/O C/L & 18.5M(60.7FT) E/O C/L CASITAS AVE	Y 4535
LA CANADA (2005)	1,117.872 340.728	L&T IN E CB WINDSOR AVE 600MM(2FT) S/O C. B. 4.5M(15FT) E/O C/L & 14.6M(48FT) N/O C/L FIGUEROA DR	Y 4669
LA CANADA (2005)	1,116.489 340.307	RD HD SPK IN W CB WINDSOR AVE 8.5M(28FT) W/O C/L & 1.5M(5FT) N/O C/L PROD FIGUEROA DR MKD (AE 248)	Y 4670
BASELINE (2005)	1,138.068 346.884	BT SPK IN E CB 600MM(2FT) E/O BCR @ NE COR LINCOLN AVE & FIGUEROA DR	Y 4684
LA CANADA (2005)	1,326.062 404.185	CRESCENTA WATER CO MON IN CB RET 5M(16.4FT) S/O BCR @ NW COR MONTROSE AVE & BRIGGS AVE	Y 4730
LA CANADA (2005)	1,126.084 343.231	RDBM TAG IN SE COR OF CONC VALVE BOX 15M(49FT) N/O C/L HIGHLAND DR NR INT BERKSHIRE AVE	Y 4877
LA CANADA (2005)	1,217.395 371.063	RDBM TAG IN NLY CB DOVER RD 5M(16.4FT) N/O C/L & 7.5M(24.6FT) WLY/O C/L HIGHLAND DR (1.5M(5FT) W/O END CB)	Y 4881
LA CANADA (2005)	1,217.314 371.038	L&T IN SLY CB DOVER RD 3.5M(11.5FT) S/O C/L & 30M(98FT) W/O APPROX C/L HIGHLAND DR (16.4FT W/O END CB)	Y 4882
LA CANADA (2005)	1,272.526 387.867	L&T IN W CB 300MM(1FT) N/O BCR @ NW COR HIGHLAND DR & ALTA VISTA DR	Y 4884

QUAD YEAR	ELEV FOOT/METER	DESCRIPTION	BM NUMBER
LA CANADA (2005)	2,133.250 650.217	RDBM TAG IN N CB 300MM(1FT) W/O BC MARKRIDGE RD 4.5M(15FT) N/O C/L & 50.5M(165FT) E/O C/L PINE CONE RD	Y 4901
LA CANADA (2005)	2,069.593 630.814	L&T IN S CB 300MM(1FT) W/O BCR @ SW COR MARKRIDGE RD & RAMSDELL AVE	Y 4904
LA CANADA (2005)	2,030.278 618.831	RDBM TAG IN W CB PENNSYLVANIA AVE 1M(3.3FT) S/O BCR @ SW COR MARKRIDGE RD	Y 4906
LA CANADA (2005)	1,832.180 558.450	RDBM TAG IN S CB ORANGE AVE 600MM(2FT) W/O BCR @ SW COR PENNSYLVANIA AVE	Y 4910
PASADENA (2005)	1,009.363 307.655	USC&GS MON IN E CB ALTADENA DR NR N END C. B. 9.8M(32FT) E/O C/L & 40M(130FT) N/O C/L PROD VERANADA AVE MKD (Z 172 RESET 1968)	Y 4942
PASADENA (2005)	1,042.848 317.861	RDBM TAG IN E CB 7.3M(24FT) N/O BCR @ NE COR NEW YORK DR & PEPPER DR	Y 4949
PASADENA (2005)	1,073.434 327.184	RDBM TAG IN E CB MIDLOTHIAN DR 25M(82FT) N/O BCR @ NE COR NEW YORK DR	Y 5058
PASADENA (2005)	1,134.286 345.731	RDBM TAG IN W CB ALLEN AVE 15.2M(50FT) N/O BCR @ NW COR NEW YORK DR	Y 5060
PASADENA (2005)	1,131.512 344.886	CS MON IN WALK 600MM(2FT) N/O CF 7M(23FT) W/O BCR @ NW COR NEW YORK DR & ALLEN AVE MKD (ALTADENA K 3 RM NO 1 1960 RE 5869)	Y 5061
PASADENA (2005)	1,148.583 350.089	RDBM TAG IN E CB 10M(32.8FT) S/O BCR @ SE COR NEW YORK DR & SIERRA BONITA AVE	Y 5062
PASADENA (2005)	1,155.797 352.288	SPK IN S CB 1M(3.3FT) W/O BCR @ SW COR NEW YORK DR & HOLLISTON AVE	Y 5065
PASADENA (2005)	1,154.732 351.963	RDBM TAG IN TOP CONC RETAINING WALL 4M(13FT) E/O CF 4.5M(14.8FT) S/O BCR @ SE COR NEW YORK DR & MAR VISTA AVE	Y 5066
PASADENA (2005)	1,111.107 338.666	L&SPK IN N CB NEW YORK DR 7M(23FT) E/O BCR @ NE COR EL MOLINO AVE	Y 5070
BASELINE (2005)	1,305.766 397.999	L&T NR N END CONC WALK TO HSE #748 LOMA ALTA DR 9.5M(31FT) S/O C/L & 20M(65FT) E/O C/L LINCOLN AVE	Y 5078
PASADENA (2005)	1,359.686 414.434	L&T NR S END OF WALK TO HSE #513 LOMA ALTA DR 9.5M(31FT) N/O C/L & 12M(40FT) E/O C/L THURIN AVE	Y 5080
PASADENA (2005)	1,415.119 431.330	L&BR IN S CB @ BCR @ SE COR LOMA ALTA DR & OLIVE AVE	Y 5082
PASADENA (2005)	1,485.580 452.806	BT SPK IN N CB 300MM(1FT) W/O BCR @ NW COR GLENROSE AVE & LOMA ALTA DR MKD (AE 421)	Y 5083
PASADENA (2005)	1,487.347 453.345	RDBM TAG IN S CB 1M(3FT) E/O BCR @ SE COR GLENROSE AVE & LOMA ALTA DR	Y 5084
PASADENA (2005)	1,553.914 473.634	SPK IN N CB 2.5M(8FT) W/O BCR @ NW COR LOMA ALTA DR & FAIR OAKS AVE	Y 5085

QUAD YEAR	ELEV FOOT/METER	DESCRIPTION	BM NUMBER
PASADENA (2005)	1,552.297 473.142	L&T IN S CB 1M(4FT) E/O BCR @ SE COR FAIR OAKS AVE & WAPELLO ST	Y 5086
PASADENA (2005)	1,690.627 515.305	L&BN IN N CB 300MM(1FT) E/O BCR @ NE COR LOMA ALTA DR & CANON BL	Y 5091
PASADENA (2005)	1,761.066 536.775	LACE TAG IN N CB LOMA ALTA DR 7.5M(24FT) E/O C/L PROD MORENGO AVE	Y 5093
PASADENA (2005)	1,719.945 524.241	BT SPK IN S CB 600MM(2FT) E/O BCR @ SE COR LAKE AVE & MOUNT CURVE AVE MKD (AE 725)	Y 5097
PASADENA (2005)	1,611.610 491.220	BT SPK IN E CB 600MM(2FT) S/O BCR @ NE COR WAPELLO ST & LAKE AVE MKD (AE 597A)	Y 5098
PASADENA (2005)	1,601.891 488.258	RDBM TAG IN E CB 600MM(2FT) N/O BCR @ SE COR LAKE AVE & WAPELLO ST	Y 5099
PASADENA (2005)	1,488.430 453.675	BT SPK IN E CB 1.5M(5FT) S/O BCR @ SE COR DOLORES DR & LAKE AVE MKD (AE 31)	Y 5101
PASADENA (2005)	1,379.946 420.609	L&SPK IN CONC HDWL @ SE COR ALTADENA DR & HOLLISTON AVE 9M(30FT) S/O & 6.5M(21FT) E/O C/L INT	Y 5114
PASADENA (2005)	1,154.645 351.937	USC&GS MON ON TOP OF CONE SHAPED ROCK 18.5M(60FT) N/O C/L ALTADENA DR & 3.5M(11.5FT) W/O C/L PROD ROOSEVELT AVE 11.5M(38FT) NE/O PP #806193E N SIDE OF DIRT TURN OUT MKD (A-173 1934)	Y 5115
PASADENA (2005)	810.279 246.974	L&LADPW BM TAG 300MM(1FT) W/O BCR @ NW COR SIERRA MADRE BL & WASHINGTON BL	Y 5533
LA CANADA (2005)	1,920.519 585.376	RDBM TAG IN E CB 300MM(1FT) S/O BCR @ SE COR BRIGGS AVE & HENRIETTA AVE	Y 5653
LA CANADA (2005)	2,029.891 618.713	RDBM TAG IN E CB 300MM(1FT) N/O BCR @ NE COR BRIGGS AVE & PICKENS CYN RD	Y 5655
LA CANADA (2005)	2,038.139 621.227	RDBM TAG IN W CB BRIGGS AVE 4M(12FT) S/O END OF CB 6.5M(21FT) W/O C/L & 46M(150FT) N/O C/L PROD PICKENS CYN RD	Y 5656
LA CANADA (2005)	2,086.155 635.862	RDBM TAG IN CONC SLAB @ EDGE OF RD 5.5M(19FT) E/O C/L BRIGGS AVE & 13M(42.7FT) S/O C/L PROD OLIVE AVE	Y 5657
PASADENA (2005)	1,325.747 404.089	RD HD SPK IN S CB (SERV RD) 300MM(1FT) E/O BCR @ SE COR FAIR OAKS AVE & ALTADENA DR 18M(59FT) S/O & 18M(59FT) E/O C/L INT MKD (AE 256)	Y 6484
PASADENA (2005)	1,359.311 414.319	BT SPK IN N CB BRIDGE ABUT 3.5M(12FT) W/O BCR @ NW COR ALTADENA DR & CREST DR	Y 6485
PASADENA (2005)	1,386.273 422.537	RD HD SPK IN S CB 300MM(1FT) W/O BCR @ SW COR ALTADENA DR & TANOBLE DR MKD (BM NO 6)	Y 6489
PASADENA (2005)	1,388.072 423.086	RDBM TAG IN W CB 300MM(1FT) N/O BCR @ NW COR ALTADENA DR & TANOBLE DR	Y 6490
PASADENA (2005)	1,334.733 406.828	CSBM MON IN WELL 450MM(1.5FT) N/O CF @ NW COR ALTADENA DR & CRESCENT DR (WLY) MKD (BM 24-30 1952)	Y 6491



QUAD YEAR	ELEV FOOT/METER	DESCRIPTION	BM NUMBER
PASADENA (2005)	1,288.781 392.822	CSBM IN E END C. B. 1M(3.3FT) W/O BCR @ NE COR ALTADENA DR & CRESCENT DR E MKD (BM 24-31A 1963 RE 5869)	Y 6494
PASADENA (2005)	1,146.145 349.346	SQ HD SPK IN SLY CB ALTADENA DR 3M(9FT) E/O BCR @ SE COR ROOSEVELT AVE MKD (AE 68)	Y 6497
PASADENA (2005)	1,076.424 328.095	SPK IN N CB GLEN CYN RD @ BCR @ NW COR HARDING AVE MKD (AE 204) (E/O ALTADENA DR)	Y 6498
PASADENA (2005)	1,031.678 314.456	RDBM TAG IN E CB ALTADENA DR 6M(20FT) N/O C/L PROD BERENDO ST	Y 6500
PASADENA (2005)	1,371.583 418.060	L&T IN E CB @ N END C. B. @ NE COR ALTADENA DR & PINECREST DR	Y 6503
BASELINE (2005)	1,222.821 372.717	SPK IN S CB 1M(3.3FT) E/O BCR @ SE COR LINCOLN AVE & MENDOCINO ST	Y 6505
BASELINE (2005)	1,287.728 392.501	L&T IN CTR CONC DR TO HSE #3180 LINCOLN AVE & 74M(243FT) S/O C/L PALM ST	Y 6507
PASADENA (2005)	1,466.045 446.852	SPK IN S CB LOMA ALTA DR 1M(4FT) E/O C/L PROD CHANEY TRAIL MKD (AE 420)	Y 6509
PASADENA (2005)	1,748.982 533.091	SPK IN E CB RET 300MM(1FT) N/O BCR @ SE COR LAKE AVE & ALTA PINE DR	Y 6511
PASADENA (2005)	1,307.183 398.431	SPK IN N CB 1.5M(5FT) W/O BCR @ NW COR ALTADENA DR & GLENROSE AVE MKD (AE 253)	Y 6519
PASADENA (2005)	855.512 260.761	CS MON IN N CB (S BBL) SIERRA MADRE BLVD 7.5M(24.6FT) E/O BCR 7.5M(24.6FT) N/O C/L & 27M(89FT) E/O C/L SIERRA MADRE VILLA MKD (BM 24-44A 1963)	Y 6539
PASADENA (2005)	783.003 238.660	L&T IN W CB @ BCR @ NW COR SIERRA MADRE VILLA & ORANGE GROVE BLVD	Y 6541
PASADENA (2005)	780.492 237.895	RAMSET IN S CB RET 5M(16.4FT) E/O BCR @ SW COR ORANGE GROVE BLVD & SIERRA MADRE VILLA AVE	Y 6542
PASADENA (2005)	839.381 255.844	CS MON 1M(3.3FT) E/O CF 3M(9.8FT) N/O BCR @ NE COR PALOMA DR & ALTADENA DR MKD (SIERRA MADRE A-5A RM 4 1963)	Y 6550
LA CANADA (2005)	1,499.426 457.026	RDBM TAG IN N CB 1.5M(5FT) W/O BCR @ NW COR FOOTHILL BLVD & CASTLE RD	Y 6558
LA CANADA (2005)	1,395.230 425.267	RDBM TAG @ E END CHANNEL HDWL 2M(6.5FT) N/O CF 58M(190FT) E/O & 14M(46FT) N/O C/L INT MONTROSE AVE & PENNSYLVANIA AVE	Y 6561
LA CANADA (2005)	1,644.117 501.128	RDBM TAG IN S CB 300MM(1FT) W/O BCR @ SW COR BRIGGS AVE & FAIRMOUNT AVE	Y 6577
LA CANADA (2005)	1,647.494 502.158	BT SPK IN N CB @ BCR @ NW COR BRIGGS AVE & FAIRMOUNT AVE	Y 6578
LA CANADA (2005)	1,958.851 597.060	RDBM TAG IN N CB ROCKDELL ST 5.2M(17FT) N/O C/L & 10.4M(35FT) W/O C/L ROSEMONT AVE	Y 6581

QUAD YEAR	ELEV FOOT/METER	DESCRIPTION	BM NUMBER
LA CANADA (2005)	1,958.371 596.913	RDBM TAG IN S CB 300MM(1FT) W/O BCR @ SW COR ROCKDELL ST & ROSEMONT AVE	Y 6582
LA CANADA (2005)	2,132.487 649.984	RDBM TAG IN SE COR BRIDGE 1M(3.3FT) W/O E END 39M(128FT) E/O C/L PINECONE RD & 4M(13FT) S/O C/L MARKRIDGE RD	Y 6585
LA CANADA (2005)	1,751.892 533.978	RDBM TAG IN S CB EL CAMINITO ST 300MM(1FT) E/O BCR @ SE COR PENNSYLVANIA AVE	Y 6588
LA CANADA (2005)	1,470.084 448.083	L&SPK IN S CB ALTURA AVE 1.5M(5FT) W/O BCR @ SW COR PENNSYLVANIA AVE MKD (BM)	Y 6592
LA CANADA (2005)	1,265.609 385.759	RDBM TAG IN S CB HIGHLAND DR 300MM(1FT) W/O C. B. 7.5M(24.6FT) S/O C/L HIGHLAND DR & 29M(95FT) E/O C/L CHEVY CHASE DR	Y 6605
LA CANADA (2005)	1,265.677 385.780	RDBM TAG IN W CB CHEVY CHASE DR 1M(3.3FT) N/O C. B. 5.5M(18FT) W/O C/L & 30M(98FT) N/O C/L HIGHLAND DR	Y 6606
LA CANADA (2005)	1,268.313 386.583	RDBM TAG IN E CB DURHAM PL 300MM(1FT) S/O CB END 3M(10FT) E/O C/L & 10.5M(34FT) S/O C/L CHEVY CHASE DR	Y 6607
LA CANADA (2005)	1,270.472 387.241	L&BN IN W CB WINDSOR PL 300MM(1FT) S/O BCR @ SW COR CHEVY CHASE DR MKD (BM)	Y 6609
LA CANADA (2005)	1,238.331 377.444	L&BN IN S END C. B. 9M(29.5FT) W/O C/L CHEVY CHASE DR & 6M(20FT) N/O C/L FLINTRIDGE AVE	Y 6611
LA CANADA (2005)	1,202.233 366.442	L&T IN E CB CHEVY CHASE DR ON OR NR C/L PROD DESCANSO DR	Y 6615
LA CANADA (2005)	1,247.816 380.335	L&BN IN W CB DESCANSO DR 300MM(1FT) N/O BCR @ NW COR PADRES TRAIL	Y 6617
LA CANADA (2005)	1,249.068 380.717	L&FC TAG IN ELY CB DESCANSO DR 8.5M(28FT) E/O C/L & 19M(62FT) N/O C/L PADRES TRAIL	Y 6618
LA CANADA (2005)	1,277.224 389.299	L&BR IN WLY CB DESCANSO DR 300MM(1FT) S/O BCR @ SW COR ENCINAS DR	Y 6619
LA CANADA (2005)	1,281.286 390.537	RDBM TAG IN ELY CB DESCANSO DR 2M(6.5FT) N/O BCR @ NE COR ENCINAS DR	Y 6620
LA CANADA (2005)	1,300.399 396.363	BT SPK IN S CB DESCANSO DR 8.5M(28FT) S/O C/L & 1M(3.3FT) E/O C/L PROD FAIRLAWN DR	Y 6621
LA CANADA (2005)	1,302.812 397.098	RDBM TAG IN N CB DESCANSO DR 300MM(1FT) W/O BCR 8.5M(28FT) N/O C/L & 16.5M(54FT) W/O C/L FAIRLAWN DR	Y 6622
LA CANADA (2005)	1,353.139 412.438	RDBM TAG IN W CB 1M(3.3FT) S/O BCR @ SW COR DESCANSO DR & VERDUGO RD	Y 6623
LA CANADA (2005)	1,352.611 412.277	L&T IN E CB 150MM(0.5FT) S/O BCR @ SE COR DESCANSO DR & VERDUGO RD	Y 6624
BASELINE (2005)	1,090.427 332.363	RDBM TAG IN W CB 600MM(2FT) N/O BCR @ NW COR LINCOLN AVE & WOODBURY RD	Y 7709
LA CANADA (2005)	1,847.429 563.098	RDBM TAG IN E CB 300MM(1FT) N/O BCR @ NE COR BRIGGS AVE & ORANGE COVE AVE	Y 7715

QUAD YEAR	ELEV FOOT/METER	DESCRIPTION	BM NUMBER
LA CANADA ( 2005 )	1,838.748 560.452	RDBM TAG IN E CB 300MM(1FT) S/O BCR @ SE COR BRIGGS AVE & ORANGE COVE AVE	Y 7716
LA CANADA ( 2005 )	1,170.495 356.768	L&BN IN E CB 600MM(2FT) S/O C. B. @ NE COR VENTURA ST & STERLING PL MKD (BM)	Y 7717
LA CANADA ( 2005 )	1,170.425 356.747	SQ SPK IN W CB 1.5M(5FT) N/O END CB @ NW COR VENTURA ST & STERLING PL MKD (BM 51)	Y 7718
PASADENA ( 2005 )	1,121.797 341.925	RDBM TAG IN E CB 600MM(2FT) N/O BCR @ NE COR WOODBURY RD & FAIR OAKS AVE	Y 7719
PASADENA ( 2005 )	1,121.355 341.790	RDBM TAG IN W CB 450MM(1.5FT) N/O BCR @ NW COR WOODBURY RD & FAIR OAKS AVE	Y 7720
PASADENA ( 2005 )	1,093.219 333.214	SPK IN W CB 21M(69FT) N/O BCR @ NW COR WOODBURY RD & GLENROSE AVE MKD (AE 536)	Y 7721
PASADENA ( 2005 )	1,347.091 410.595	SPK IN N CB 300MM(1FT) E/O BCR @ NE COR ALTADENA DR & MARENGO AVE MKD (AE 269)	Y 7723
PASADENA ( 2005 )	1,031.228 314.319	FC TAG IN S CB 1M(3FT) W/O BCR @ SW COR ALTADENA DR & BERENDO ST	Y 7725
PASADENA ( 2005 )	984.781 300.162	RDBM TAG IN W CB 600MM(2FT) N/O BCR @ NW COR ALTADENA DR & NEW YORK DR	Y 7726
PASADENA ( 2005 )	873.322 266.189	RDBM TAG IN W CB 300MM(1FT) N/O BCR @ NW COR CASA GRANDE ST & ALTADENA DR	Y 9462
PASADENA ( 2005 )	1,135.908 346.226	RDBM TAG IN E CB RET 300MM(1FT) N/O BCR @ SE COR NEW YORK DR & LAKE AVE	Y 9467
PASADENA ( 2005 )	1,140.239 347.546	RDBM TAG IN E CB 300MM(1FT) S/O BCR @ NE COR NEW YORK DR & LAKE AVE	Y 9468
PASADENA ( 2005 )	1,106.432 337.241	CSBM MON 300MM(1FT) N/O CF @ BCR @ NW COR SANTA ROSA AVE & WOODBURY RD MKD (BM 24-15A 1971)	Y 9470
PASADENA ( 2005 )	1,123.563 342.463	RDBM TAG IN N CB 1M(3.3FT) E/O BCR @ NW COR SANTA ANITA AVE & WOODBURY RD	Y 9471
PASADENA ( 2005 )	1,372.956 418.478	L&PK NAIL IN W CB 600MM(2FT) N/O BCR @ NW COR ALTADENA DR & PINECREST DR	Y 9475
PASADENA ( 2005 )	1,388.410 423.189	RDBM TAG IN E CB 300MM(1FT) N/O BCR @ NE COR ALTADENA DR & PORTER AVE	Y 9476
PASADENA ( 2005 )	1,373.844 418.749	CSBM MON 5M(16FT) N/O BCR @ NW COR ALTADENA DR & LAKE AVE MKD (BM 24-25A)	Y 9478
PASADENA ( 2005 )	943.817 287.676	L&T IN W CB 300MM(1FT) N/O BCR @ NW COR ALTADENA DR & GARFIAS DR	Y 9479
PASADENA ( 2005 )	1,009.302 307.636	L&T IN S CB 900MM(3FT) W/O BCR @ SW COR NEW YORK DR & HARDING AVE	Y 9480

QUAD YEAR	ELEV FOOT/METER	DESCRIPTION	BM NUMBER
PASADENA (2005)	1,333.479 406.446	RDBM TAG IN W CB @ S END C. B. @ NW COR ALTADENA DR & FAIROAKS AVE	Y 9483
PASADENA (2005)	1,122.994 342.290	CSBM MON IN N END C. B. 14M(46FT) N/O BCR @ NW COR WOODBURY RD & FAIR OAKS AVE MKD (BM 24-16A 1971)	Y 9484
PASADENA (2005)	1,295.387 394.835	L&T NR CTR CB RET @ NE COR LAKE AVE & MARCHETA ST	Y 9485
PASADENA (2005)	1,295.523 394.877	L&T IN W CB RET 600MM(2FT) N/O BCR @ SW COR LAKE AVE & MARIPOSA ST	Y 9486
PASADENA (2005)	1,249.976 380.994	CSBM MON @ BCR @ NE COR LAKE AVE & MENDOCINO ST MKD (BM 24-26D 1975)	Y 9487
PASADENA (2005)	1,187.642 361.994	L&T IN E CB 1M(3.3FT) S/O BCR @ NE COR LAKE AVE & BOSTON ST	Y 9489
PASADENA (2005)	1,186.445 361.630	L&T IN W CB LAKE AVE 12M(39FT) N/O C/L PROD BOSTON ST	Y 9490
LA CANADA (2005)	1,085.922 330.990	RDBM TAG IN W END C. B. 14M(46FT) E/O BCR @ NE COR WOODBURY RD & WINDSOR AVE	Y 9542
LA CANADA (2005)	1,084.449 330.541	RDBM TAG IN S CB 300MM(1FT) W/O BCR @ SW COR WOODBURY RD & WINDSOR AVE	Y 9543
LA CANADA (2005)	1,237.523 377.198	RDBM TAG IN W CB 300MM(1FT) N/O BCR @ NW COR OAKWOOD ST & FOOTHILL BLVD	Y 9547
LA CANADA (2005)	1,223.007 372.774	RDBM TAG IN W CB @ BCR @ NW COR CASITAS AVE & MARIPOSA ST	Y 9548
LA CANADA (2005)	1,529.256 466.119	RDBM TAG IN N CB 1.5M(5FT) W/O BCR @ NW COR FOOTHILL BLVD & BRIGGS AVE	Y 9952
LA CANADA (2005)	2,072.401 631.670	RDBM TAG IN SLY CB 1.5M(5FT) E/O BCR @ SE COR RAMSDELL AVE & MARKRIDGE RD	Y 9953
LA CANADA (2005)	1,757.118 535.571	L&BN IN E CB BRIGGS AVE @ 16M(52.5FT) S/O C/L PROD LOS AMIGOS ST	Y 9958
LA CANADA (2005)	2,038.267 621.266	RDBM TAG IN SLY CB MTN PINE DR 600MM(2FT) W/O BCR @ SW COR PINEGLEN RD	Y 9959
LA CANADA (2005)	2,040.699 622.007	RDBM TAG IN NLY CB MTN PINE DR 600MM(2FT) W/O BCR @ NW COR PINEGLEN RD	Y 9960
LA CANADA (2005)	1,475.469 449.724	RDBM TAG IN W CB PENNSYLVANIA AVE 300MM(1FT) N/O BCR @ NW COR ALTURA AVE	Y 9961
LA CANADA (2005)	1,392.884 424.552	L&SPK IN SLY CB MONTROSE AVE 1.5M(5FT) E/O BCR @ SE COR PENNSYLVANIA AVE	Y 9962
LA CANADA (2005)	1,386.594 422.635	RDBM TAG IN NLY CB MONTROSE AVE 1M(3.3FT) W/O BCR @ NW COR RAMSDELL AVE	Y 9963
LA CANADA (2005)	1,383.959 421.832	SPK&L IN SLY CB MONTROSE AVE 3M(9.8FT) W/O BCR @ SW COR RAMSDELL AVE MKD (BM)	Y 9964

QUAD YEAR	ELEV FOOT/METER	DESCRIPTION	BM NUMBER
LA CANADA ( 2005 )	1,354.255 412.778	SPK&L IN SLY CB MONTROSE AVE 4M(13FT) W/O BCR @ SW COR LA CRESCENTA AVE	Y 9965
LA CANADA ( 2005 )	1,350.086 411.507	RDBM TAG IN ELY CB LA CRESCENTA AVE 600MM(2FT) S/O BCR @ SE COR MONTROSE AVE	Y 9966
LA CANADA ( 2005 )	1,346.184 410.318	RDBM TAG IN SLY CB MONTROSE AVE 4.5M(14.8FT) W/O BCR @ SW COR	Y 9967
LA CANADA ( 2005 )	1,321.945 402.930	RDBM TAG IN SLY CB MONTROSE AVE 600MM(2FT) W/O BCR @ SW COR OCEAN VIEW BLVD	Y 9968
LA CANADA ( 2005 )	1,324.798 403.800	RDBM TAG IN ELY CB OCEAN VIEW BLVD CB 600MM(2FT) N/O BCR @ NE COR MONTROSE AVE	Y 9969
LA CANADA ( 2005 )	1,415.472 431.437	RDBM TAG IN E CB OCEAN VIEW BLVD 1.5M(5FT) S/O BCR @ SE COR LUANA LN	Y 9970
LA CANADA ( 2005 )	1,420.980 433.116	RDBM TAG IN E CB 1M(3.3FT) N/O BCR @ NE COR OCEAN VIEW BLVD & LUANA LN	Y 9971
LA CANADA ( 2005 )	1,844.762 562.285	RDBM TAG IN E CB 600MM(2FT) N/O BCR @ NE COR ORANGE AVE & RAMSDELL AVE	Y 9972
PASADENA ( 2005 )	836.893 255.086	DPW BM TAG IN E CB 300MM(1FT) S/O BCR @ SE COR ALTADENA DR & PALOMA DR	Y 10291
PASADENA ( 2005 )	871.769 265.716	CITY ENGR RCE TAG #5909 IN W CB 300MM(1FT) S/O BCR @ SW COR ALTADENA DR & CASA GRANDE ST	Y 10292
PASADENA ( 2005 )	910.890 277.640	L&BR IN E CB RET 3M(10FT) N/O BCR @ SE COR ALTADENA DR & WASHINGTON BLVD	Y 10293
PASADENA ( 2005 )	942.327 287.222	L&SPK IN E CB ALTADENA DR & 3.7M(12FT) S/O C/L PROD GARFIAS DR W	Y 10294
PASADENA ( 2005 )	984.196 299.984	L&BR IN E CB RET 1M(3.3FT) S/O BCR @ NE COR ALTADENA DR & NEW YORK DR	Y 10295
LA CANADA ( 2005 )	1,085.369 330.821	DPW BM TAG IN S CB 600MM(2FT) E/O BCR @ SE COR WOODBURY RD & 210 FRWY OVERPASS BRIDGE #52-2198 (644M(0.4MI) W/O C/L WINDSOR AVE)	Y 10298
LA CANADA ( 2005 )	1,085.197 330.769	DPW BM TAG IN S CB 600MM(2FT) W/O BCR @ SW COR WOODBURY RD & 210 FRWY OVERPASS BRIDGE #52-2198 (644M(0.4MI) W/O C/L WINDSOR AVE)	Y 10299
LA CANADA ( 2005 )	1,075.283 327.747	CS MON IN W CB @ S END C. B. 12.5M(41FT) S/O BCR @ SW COR OAK GROVE DR & BERKSHIRE PL MKD (A7 2E RE 22726)	Y 10300
LA CANADA ( 2005 )	1,077.219 328.337	DIVISION OF HWYS TAG IN CB RET 4.5M(15FT) S/O BCR @ NW COR OAK GROVE DR & BERKSHIRE PL	Y 10301
LA CANADA ( 2005 )	1,166.765 355.631	L&T IN CTR CB RET 8M(26FT) S/O BCR @ NW COR FOOTHILL BLVD & HAMPTON RD	Y 10302

QUAD YEAR	ELEV FOOT/METER	DESCRIPTION	BM NUMBER
LA CANADA (2005)	1,197.317 364.943	DPW BM TAG IN E CB 1M(3.3FT) N/O BCR @ NE COR FOOTHILL BLVD & GOULD AVE @ C. B.	Y 10303
LA CANADA (2005)	1,308.512 398.836	CS MON IN CONC GUTTER NR CTR OF CB RET @ NE COR FOOTHILL BLVD & ANGELES CREST HWY MKD (MTL A 12 RM 1 RE 5869)	Y 10304
LA CANADA (2005)	1,314.182 400.564	CS MON FL 300MM(1FT) N/O CF 6M(20FT) W/O BCR @ NW COR FOOTHILL BLVD & ANGELES CREST HWY MKD (BM 47-7A 1966 RE 5869)	Y 10305
LA CANADA (2005)	1,367.341 416.767	CS MON IN S END HDWL 5M(16.4FT) W/O BCR @ NE COR FOOTHILL BLVD & LA CANADA BLVD MKD (BM 47-8A 1971 RE 5869)	Y 10306
LA CANADA (2005)	1,523.033 464.222	LACO BM TAG IN S CB FOOTHILL BLVD 12M(39FT) S/O C/L ON C/L PROD LITTLETON PL	Y 10309
LA CANADA (2005)	1,570.810 478.784	L&BR IN N CB 6M(19.7FT) E/O BCR @ NE COR FOOTHILL BLVD & RAMSDELL AVE	Y 10310
LA CANADA (2005)	1,583.250 482.576	L&SPK IN E END C. B. 11M(36FT) W/O BCR @ NW COR FOOTHILL BLVD & PENNSYLVANIA AVE	Y 10311
PASADENA (2005)	851.202 259.447	DPW BM TAG IN S CB 300MM(1FT) W/O BCR @ SW COR SIERRA MADRE BLVD (S BBL) & SIERRA MADRE VILLA	Y 10350
PASADENA (2005)	1,337.067 407.539	L&BN IN MCR @ NW COR ALTADENA DR & CRESCENT DR (WLY)	Y 10351
PASADENA (2005)	1,359.311 414.319	CSBM MON IN S CB OF BRIDGE ABUT 7M(23FT) S/O C/L ALTADENA DR & 17M(55FT) W/O C/L PROD CREST DR MKD (BM 24-28C 1977 RE 22726)	Y 10352
PASADENA (2005)	1,721.339 524.666	BT SPK IN N CB 3M(10FT) E/O BCR @ NE COR MOUNT CURVE AVE & LAKE AVE MKD (A-15)	Y 10353
PASADENA (2005)	1,244.766 379.406	L&T IN E CB 1M(3.3FT) S/O BCR @ SE COR LAKE AVE & MENDOCINO ST E	Y 10354
PASADENA (2005)	810.498 247.041	DPW BM TAG IN N CB 300MM(1FT) E/O BCR @ NE COR SIERRA MADRE BLVD & WASHINGTON BLVD	Y 10355
PASADENA (2005)	813.255 247.881	DPW BM TAG IN W CB 1M(3.3FT) N/O BCR @ NW COR SIERRA MADRE BLVD & PALOMA ST	Y 11200
PASADENA (2005)	1,221.495 372.313	DPW BM TAG IN ROCKWALL @ SW COR ALTADENA DR & KENGARY LN (PVT) 10M(33FT) W/O & 9M(30FT) S/O C/L INT	Y 11201
PASADENA (2005)	1,295.591 394.897	DPW BM TAG N CB 600MM(2FT) E/O END @ NW COR ALTADENA DR & CRESCENT DR E	Y 11202
PASADENA (2005)	1,382.388 421.353	L&BR IN W CB RET 300MM(1FT) S/O BCR @ NW COR ALTADENA DR & MAIDEN LN	Y 11203
PASADENA (2005)	1,356.945 413.598	L&T IN S CB 300MM(1FT) W/O BCR @ SW COR ALTADENA DR & SANTA ROSA AVE	Y 11205
PASADENA (2005)	1,351.090 411.813	CSBM MON IN E CB @ S END C. B. 7M(23FT) N/O BCR @ NE COR ALTADENA DR & MARENGO AVE MKD (BM 24-23D 1977)	Y 11206



QUAD YEAR	ELEV FOOT/METER	DESCRIPTION	BM NUMBER
PASADENA (2005)	1,279.464 389.982	LACO DPW TAG IN W CB 2M(6.5FT) S/O BCR @ SW COR ALTADENA DR & OLIVE AVE	Y 11207
PASADENA (2005)	1,041.641 317.493	FC MON IN WALK 1.5M(5FT) E/O BCR @ NE COR NEW YORK DR & PEPPER DR MKD (BM 60-75)	Y 11208
PASADENA (2005)	1,100.375 335.395	DPW BM TAG IN W CB 1M(3.3FT) N/O BCR @ NW COR WOODBURY RD & EL MOLINO AVE (N)	Y 11209
PASADENA (2005)	1,135.325 346.048	DPW BM TAG IN N CB 1M(3.3FT) W/O BCR @ NW COR WOODBURY RD & MARENGO AVE	Y 11210
PASADENA (2005)	1,652.766 503.765	LACE TAG IN E CB 300MM(1FT) S/O BCR @ SE COR LOMA ALTA DR & ALTA PINE DR	Y 11213
PASADENA (2005)	1,582.784 482.434	DPW BM TAG IN S CB LOMA ALTA DR 22M(72FT) W/O C/L DRWY TO HSE #160 (OPP SE COR FC R/W)	Y 11214
PASADENA (2005)	1,755.432 535.057	SPK IN S CB @ E END C. B. 3M(10FT) E/O BCR @ SE COR LAKE AVE & ALTA PINE DR	Y 11215
BASELINE (2005)	1,297.930 395.610	L&BR IN E CB 1M(3.3FT) N/O BCR @ NE COR LINCOLN AVE & PALM ST	Y 11216
PASADENA (2005)	738.777 225.180	LS TAG #2959 IN E CB @ BCR @ SE COR SIERRA MADRE VILLA AVE & ELECTRIC DR	Y 11217
PASADENA (2005)	940.645 286.709	PK NAIL IN N CB @ NE COR BRIDGE ABUT OVER EATON CYN WASH 12M(40FT) NLY C/L NEW YORK DR & 322M(0.2MI) ELY C/L ALTADENA DR	Y 11223
PASADENA (2005)	949.069 289.277	PK NAIL IN N CB @ NW COR BRIDGE ABUT OVER EATON CYN WASH 12M(40FT) NLY C/L NEW YORK DR & 276M(900FT) ELY OF C/L ALTADENA DR	Y 11224
LA CANADA (2005)	1,190.490 362.862	CS BR CAP IN WALK 7M(23FT) E/O BCR IN RET @ NW COR FOOTHILL BLVD & DALERIDGE DR	Y 11226
LA CANADA (2005)	1,191.155 363.065	L&T IN S CB FOOTHILL BLVD 7.5M(25FT) S/O C/L & 18M(59FT) W/O C/L PROD DALERIDGE DR	Y 11227
LA CANADA (2005)	1,162.509 354.334	DPW BM TAG IN W CB 1M(3.3FT) S/O BCR @ SW COR FOOTHILL BLVD & GEORGIAN RD	Y 11228
LA CANADA (2005)	1,496.042 455.995	DPW BM TAG IN S CB RET 2M(6.5FT) W/O BCR @ SE COR OCEAN VIEW BLVD & FOOTHILL BL	Y 11230
LA CANADA (2005)	1,497.958 456.579	L&T IN N CB 16M(52.5FT) E/O BCR @ NE COR FOOTHILL BLVD & OCEAN VIEW BLVD	Y 11231
LA CANADA (2005)	1,344.048 409.667	L&T IN SLY CB @ END OF CONC 11M(36FT) S/O C/L MONTROSE AVE & 21M(69FT) E/O C/L ROSEMONT AVE	Y 11232
LA CANADA (2005)	1,673.666 510.135	DPW BM TAG IN W CB 1M(3.3FT) S/O BCR @ SW COR LOS OLIVOS LN & PENNSYLVANIA AVE	Y 11233
LA CANADA (2005)	1,681.136 512.412	DPW BM TAG IN E CB 7M(23FT) N/O BCR (IN C.B.) @ NE COR LOS OLIVOS LN & PENNSYLVANIA AVE	Y 11234

QUAD YEAR	ELEV FOOT/METER	DESCRIPTION	BM NUMBER
LA CANADA (2005)	1,758.651 536.038	CO ENG TAG IN W CB PENNSYLVANIA AVE ON C/L PROD EL CAMINTO ST	Y 11235
LA CANADA (2005)	1,933.411 589.305	L&BR IN S CB RET 2M(6.5FT) E/O BCR @ SW COR PENNSYLVANNIA AVE & FRANCES AVE	Y 11236
LA CANADA (2005)	1,939.079 591.033	L&SPK IN N CB 3M W/O BCR @ NW COR PENNSYLVANIA AVE & FRANCES AVE 27M W & 4.5M N/O C/L INT	Y 11237
LA CANADA (2005)	2,015.193 614.233	L&BR IN E CB PENNSYLVANIA AVE 6.5M(21FT) E/O C/L & 11M(36FT) N/O C/L PROD RIMHILL RD	Y 11238
LA CANADA (2005)	2,029.824 618.692	FC BM MON IN W CB PENNSYLVANIA AVE 6.5M(21FT) W/O C/L & 13M(42.7FT) S/O C/L PROD MARKRIDGE RD MKD (BM 40-271 1966)	Y 11239
LA CANADA (2005)	1,836.498 559.766	DPW BM TAG IN N CB 1M(3.3FT) W/O BCR @ NW COR PENNSYLVANIA AVE & ORANGE AVE	Y 11240
LA CANADA (2005)	1,840.323 560.932	SPK&W IN SLY CB ORANGE AVE 21M(69FT) E/O BCR @ SE COR RAMSDELL AVE MKD (137)	Y 11241
LA CANADA (2005)	1,797.822 547.978	L&BR IN W CB RET 1.5M(5FT) N/O BCR @ SW COR ORANGE AVE & ROSEMONT AVE	Y 11242
LA CANADA (2005)	1,800.960 548.934	L&BR IN S CB 175MM(0.6FT) E/O BCR @ SE COR ORANGE AVE & ROSEMONT AVE	Y 11243
LA CANADA (2005)	1,890.057 576.091	CO ENG TAG IN E CB BRIGGS AVE 6M(19.7FT) N/O C/L PROD WHITTIER DR	Y 11244
LA CANADA (2005)	1,198.497 365.303	L&FC TAG IN W CB @ BCR SW COR CASITAS AVE & HARRIET ST	Y 11245
LA CANADA (2005)	1,345.998 410.261	FC DISK IN E END CONC HDWL 5M(16.4FT) S/O CF 11M(36FT) S/O C/L MONTROSE AVE & 36M(118FT) W/O C/L ROSEMONT AVE MKD (BM 040-30420 1967)	Y 11246
LA CANADA (2005)	1,421.107 433.155	LA CITY BR DISK IN SE COR C. B. 1M(3.3FT) W/O BCR @ NE COR OCEAN VIEW BLVD & LUANA LN MKD (PBM 09-00477 1987)	Y 11247
LA CANADA (2005)	1,100.521 335.440	L&DPW TAG IN W CB 300MM(1FT) S/O BCR @ SW COR WINDSOR AVE & LA CANADA VERDUGO RD	Y 11248
LA CANADA (2005)	1,103.077 336.219	L&BR IN W CB 7M(23FT) N/O BCR @ NW COR WINDSOR AVE & LA CANADA VERDUGO RD	Y 11249
LA CANADA (2005)	1,142.348 348.189	L&BR IN E CB WINDSOR AVE 14.5M(48FT) E/O C/L & @ OR NR C/L PROD KENT ST	Y 11250
LA CANADA (2005)	1,142.213 348.148	LACO DPW TAG IN N CB 400MM(1.3FT) W/O BCR @ NW COR KENT ST & WINDSOR AVE	Y 11251
LA CANADA (2005)	1,103.349 336.302	L&BR IN S CB HIGHLAND DR 8M(26FT) S/O C/L ON C/L PROD (210) FRWY OVERPASS	Y 11252
LA CANADA (2005)	1,207.747 368.122	DPW BM TAG IN S CB BERKSHIRE AVE 1M(3.3FT) E/O BCR @ SE COR CHEVY CHASE DR	Y 11254

QUAD YEAR	ELEV FOOT/METER	DESCRIPTION	BM NUMBER
LA CANADA (2005)	1,212.686 369.628	DPW BM TAG IN W CB CHEVY CHASE DR 4M(13FT) N/O C/L PROD BERKSHIRE AVE	Y 11255
LA CANADA (2005)	1,204.324 367.079	L&BR IN W CB CHEVY CHASE DR @ S END C. B. 5M(16FT) W/O C/L & 26M(85.3FT) N/O C/L DESCANSO DR (TO THE W)	Y 11256
LA CANADA (2005)	1,171.558 357.092	CS MON IN CONC PAD 7M(23FT) N/O C/L HIGHLAND DR & 360M(0.2MI) W/O BERKSHIRE AVE E 4.5M(14.8FT) W/O PP #2288439E 1M(3.3FT) N/O GUARD RAIL MKD (TRAV STA ALTADENA B-2 1966)	Y 11257
PASADENA (2005)	807.385 246.092	LACO BM TAG IN N CB SIERRA MADRE BLVD (S BRL) 300MM(1FT) E/O BCR 322M(0.2MI) E/O EATON CYN RD (OPP HSE #3150)	Y 11549
PASADENA (2005)	840.001 256.033	L&T IN N CB NEW YORK DR 322M(0.2MI) W/O SIERRA MADRE BLVD (6.5FT W/O C/L DRWY TO HSE #3271)	Y 11550
PASADENA (2005)	855.614 260.792	L&LS TAG #3222 IN N CB NEW YORK DR @ C/L PROD BRADLEY ST	Y 11551
PASADENA (2005)	907.225 276.523	FC MON IN WELL DN 200MM(0.7FT) ON C/L MEDIAN NEW YORK DR 9.5M(31FT) W/O NOSE @ ENT TO EATON FLOOD CONTROL YD 370M(0.2MI) NW/O BRADLEY ST MKD (BM 060-02466 1968)	Y 11552
PASADENA (2005)	912.983 278.278	L&T IN S CB NEW YORK DR 12.5M(41FT) S/O C/L & 10M(32.8FT) ELY/O C/L EATON CYN RD	Y 11553
PASADENA (2005)	882.955 269.125	L&RCE TAG IN W CB 2M(6.5FT) S/O BCR @ SW COR ALTADENA DR & BRIGDEN RD	Y 11554
PASADENA (2005)	1,376.137 419.448	LACO BM TAG IN N CB 12M(39FT) E/O BCR @ NE COR ALTADENA DR & LAKE AVE	Y 11555
PASADENA (2005)	1,334.962 406.898	LACO BM TAG IN MCR @ SE COR ALTADENA DR & HIGHVIEW AVE	Y 11556
PASADENA (2005)	1,286.713 392.191	LACO BM TAG IN N CB 9.5M(31FT) E/O BCR @ NE COR ALTADENA DR & OLIVE AVE (@ E END C. B.)	Y 11557
PASADENA (2005)	804.653 245.259	USC&GS BM MON IN CONC POST FL NR MCR @ SE COR ALTADENA DR & DEORDOR CIRCLE MKD (W 172 RESET 1941)	Y 11558
PASADENA (2005)	1,012.602 308.642	L&T IN HDWL OVER CHANNEL 2.5M(8.2FT) W/O BCR @ NW COR NEW YORK DR & HARDING AVE (N)	Y 11559
PASADENA (2005)	1,148.792 350.153	SPK IN S CB 600MM(2FT) E/O BCR @ SE COR NEW YORK DR & SINALOA AVE	Y 11560
PASADENA (2005)	1,131.712 344.947	L&T IN W CB 1M(3.3FT) S/O BCR @ SW COR WOODBURY RD & MARENGO AVE	Y 11562
PASADENA (2005)	1,089.410 332.053	LACO BM TAG IN S CB 1.5M(5FT) E/O BCR @ SE COR WOODBURY RD & GLENROSE AVE	Y 11563
PASADENA (2005)	1,803.090 549.583	LACO BM TAG IN E CB 4.5M(14.8FT) S/O BCR @ SE COR LOMA ALTA DR & LALE AVE	Y 11564
PASADENA (2005)	1,761.208 536.818	CE TAG IN S CB 1.5M(5FT) W/O BCR @ SE COR MARENGO AVE & LOMA ALTA DR	Y 11565

QUAD YEAR	ELEV FOOT/METER	DESCRIPTION	BM NUMBER
LA CANADA (2005)	1,085.581 330.886	LACO BM TAG IN N CB @ BCR @ NW COR WOODBURY RD & CASITAS AVE (@ E END C. B.)	Y 11566
LA CANADA (2005)	1,175.988 358.442	LACO BM TAG IN E CB @ S END C. B. @ NE COR VENTURA ST & CASITAS AVE	Y 11567
LA CANADA (2005)	1,200.431 365.892	L&T IN NW CB RET 4M(13FT) S/O BCR @ NW COR CASITAS AVE & HARRIET ST	Y 11568
LA CANADA (2005)	1,271.618 387.590	SM SQ HD SPK IN N CB 3M(9.8FT) W/O BCR @ NW COR HIGHLAND DR & ALTA VISTA DR	Y 11569
LA CANADA (2005)	1,259.284 383.831	LACO BM TAG IN NW COR CONC DRWY TO HSE #4033 CHEVY CHASE DR 5.6M(18FT) S/O C/L & 250M(0.2MI) E/O FLINTRIDGE AVE N 1M(3.3FT) E/O E SIDE STONE PILLAR MAIL BOX	Y 11570
LA CANADA (2005)	1,452.817 442.820	CS MON IN WK 500MM(1.6FT) N/O CF 13.5M(44FT) N/O C/L FOOTHILL BLVD & 9M(29.5FT) E/O C/L PROD ALTA CANYNADA RD MKD (CRES K-11 RM-1 1966)	Y 11571
LA CANADA (2005)	1,104.310 336.595	SPK IN S CB 500MM(1.6FT) W/O END CB @ SE COR OAK GROVE DR & FOOTHILL BLVD (ENT TO WATERSHED PARK)	Y 11572
LA CANADA (2005)	1,277.148 389.276	RAMSET&W IN E CB 1M(3.3FT) N/O BCR @ SE COR FOOTHILL BLVD & BEULAH DR	Y 11573
LA CANADA (2005)	1,422.595 433.608	SPK IN S CB FOOTHILL BLVD 12M(39FT) S/O C/L & 2M(6.5FT) W/O C/L PROD LOMA VISTA DR	Y 11574
LA CANADA (2005)	1,565.683 477.222	LACO BM TAG IN S CB FOOTHILL BLVD 1M(3.3FT) E/O BCR @ SE COR LA CRESENTA AVE	Y 11575
LA CANADA (2005)	1,925.559 586.912	LACO BM TAG IN W CB 1M(3.3FT) S/O BCR @ SW COR BRIGGS AVE & CINCO CASITA LN (PVT)	Y 11577
LA CANADA (2005)	1,774.081 540.742	L&T IN S CB ORANGE AVE & 5.5M(18FT) W/O C/L PROD EL ADOBE LN	Y 11578
PASADENA (2005)	912.002 277.979	L&DPW TAG IN S CB 300MM(1FT) W/O BCR @ SW COR ALTADENA DR & WASHINGTON BL	Y 11809
PASADENA (2005)	1,071.847 326.700	L&T @ MOC OF SE COR COOLIDGE AV & HARDING AV (W/O ALTADENA DR)	Y 11810
PASADENA (2005)	1,387.622 422.948	L&DPW TAG @ MOC OF NW COR PORTER AV & ATADENA DR	Y 11811
PASADENA (2005)	1,380.340 420.729	L&T IN CONC HDWL @ SW COR ALTADENA DR & HOLLISTON AV	Y 11812
PASADENA (2005)	1,149.848 350.475	PK NAIL IN W CB @ ECR @ SW COR NEW YORK DR & SIERRA BONITA AV	Y 11814
PASADENA (2005)	1,153.792 351.677	L&BM TAG IN W CB 300MM(1FT) N/O ECR @ SW COR NEW YORK DR & MAR VISTA AV	Y 11815
PASADENA (2005)	915.031 278.902	L&BM TAG IN N CB 5.2M(17FT) W/O BCR @ NE COR NEW YORK DR & EATON CYN DR	Y 11816

QUAD YEAR	ELEV FOOT/METER	DESCRIPTION	BM NUMBER
PASADENA (2005)	1,413.033 430.694	L&T IN N CB LOMA ALTA DR 9.1M(30FT) W/O C/L PROD LOMA ALTA DR & OLIVE AV	Y 11817
PASADENA (2005)	1,308.718 398.898	LA CO DPW TAG NEAR MOC @ NE COR LOMA ALTA DR & LINCOLN AV	Y 11818
PASADENA (2005)	1,259.232 383.815	L&DPW TAG IN N CB 300MM(1FT) E/O BCR @ NE COR LINCOLN AV & ALTADENA DR	Y 11819
PASADENA (2005)	1,223.218 372.838	L&DPW TAG @ MOC OF WCR @ SW COR LINCOLN AV & MENDOCINO ST	Y 11820
PASADENA (2005)	1,140.137 347.515	L&DPW TAG IN W CB IN CTR C.B. 18.3M(60FT) N/O BCR @ NW COR LINCOLN AV & FIGUEROA DR	Y 11821
PASADENA (2005)	1,089.245 332.003	L&T IN MOC @ NW COR WOODBURY RD & LINCOLN AV	Y 11822
PASADENA (2005)	1,103.822 336.446	L&T IN S CB 300MM(1FT) E/O BCR @ SW COR WOODBURY RD & SANTA ROSA AV	Y 11823
PASADENA (2005)	1,092.207 332.906	SPK IN S CB 3.7M(12FT) E/O ECR @ SE COR WOODBURY RD & MADISON AV	Y 11824
PASADENA (2005)	1,204.146 367.025	USGS BRASS DISK @ SLY CONC PILLER OF STEPS (ENTRANCE) TO ELIOT MIDDLE SCHOOL (BLDG #2184 LAKE AV)	Y 11825
PASADENA (2005)	1,305.715 397.983	L&DPW TAG IN S CB 300MM(1FT) W/O BCR @ SW COR ALTADENA DR & GLENROSE AV	Y 11826
LA CANADA (2005)	1,086.325 331.113	L&DPW TAG IN E CB 300MM(1FT) N/O ECR @ NE COR WOODBURY RD & CASITAS AV	Y 11827
LA CANADA (2005)	1,221.499 372.314	L&DPW TAG IN N CB 300MM(1FT) W/O ECR @ NW COR CASITAS AV & MARIPOSA ST	Y 11828
LA CANADA (2005)	1,365.914 416.332	L&LS#5301 TAG @ NE COR LA CANADA BL & FOOTHILL BL IN THE MOC	Y 11829
LA CANADA (2005)	1,231.769 375.444	L&DPW TAG @ NE COR CONC PAD TO PAC BELL PANEL BOX 38.1M(125FT) N/O & 7.6M(25FT) W/O C/L INT CHEVY CHASE DR & FLINTRIDGE AV +/- 5FT NWLY OF PP#620233H	Y 11830
LA CANADA (2005)	1,347.161 410.616	L&DPW TAG IN CB NEAR MOC @ SE COR MONTROSE AV & RAYMOND AV	Y 11831
LA CANADA (2005)	1,323.518 403.410	L&LA CO ENG TAG IN CB NEAR MOC @ NE COR MONTROSE AV & BRIGGS AV	Y 11832
LA CANADA (2005)	1,763.944 537.652	L&DPW TAG IN W CB 450MM(1.5FT) S/O C.B. @ NW COR BRIGGS AV & LOS AMIGOS AV	Y 11833